

**ONE FRAME 108FR1**

**BILL OF MATERIAL**

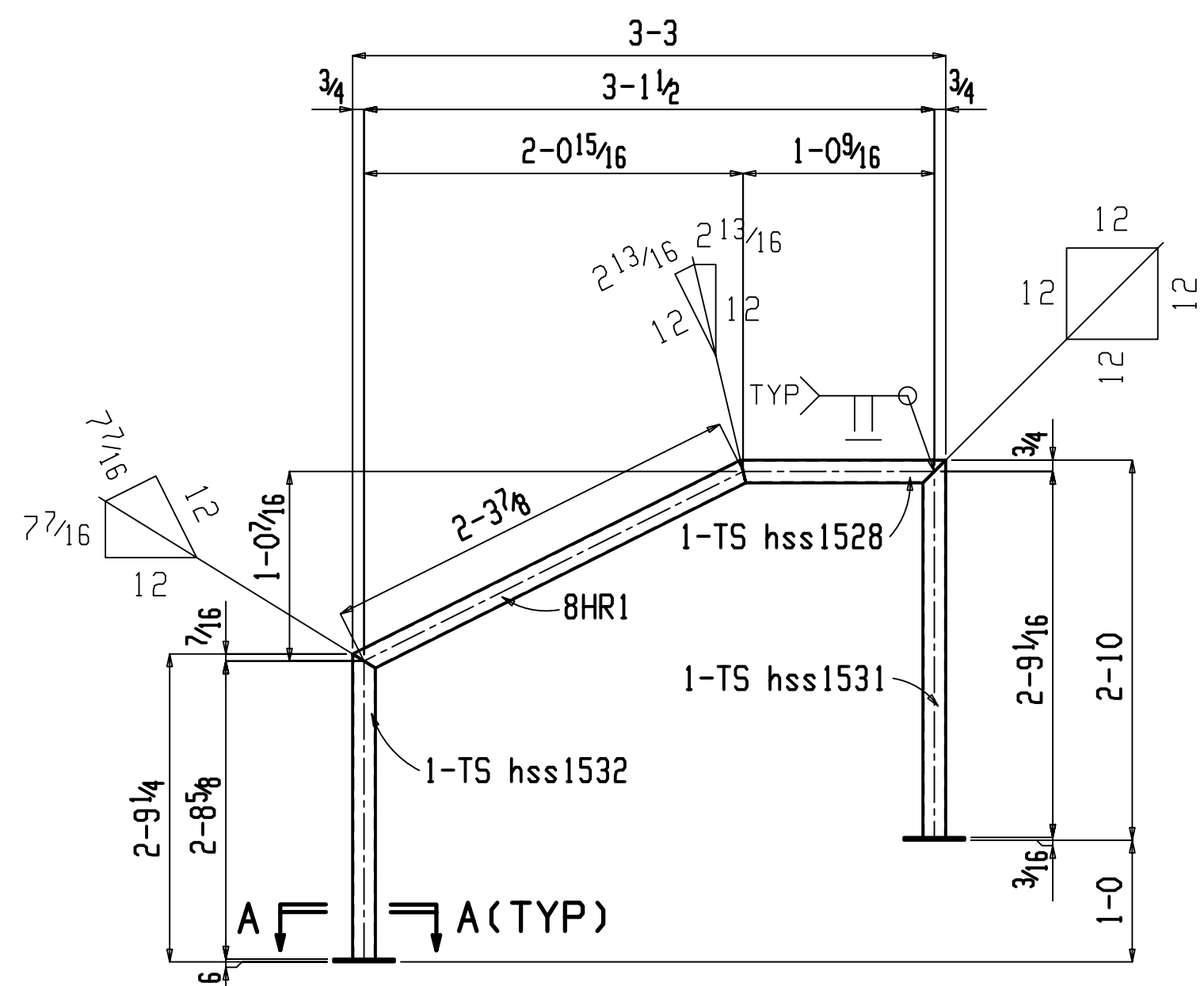
QTY	UNIT	QTY	MARK	PIECE	DESCRIPTION	LENGTH	WEIGHT	ADVANCE	STEEL	
TOTAL							TOTAL	REMARKS	MILL #	GRADE
ONE		108FR1			FRAME		1417			
1		1	hss155		HSS16x4x1/4	15	10			A500B
1		1	hss1009		HSS16x4x1/4	16	6 <sup>3</sup> / <sub>16</sub>	541	ROLLED	A500B
2		2	hss1011		HSS16x4x1/4	2	0 <sup>3</sup> / <sub>16</sub>	135		A500B
2		2	hss1005		HSS12x4x1/4	0	8	34		A500B
1		1	hss1012		HSS4x4x1/4	2	8 <sup>3</sup> / <sub>16</sub>	33		A500B
1		1	hss1013		HSS4x4x1/4	2	8 <sup>3</sup> / <sub>16</sub>	33		A500B
2		2	hss153		PIPE 4 STD	0	4 <sup>1</sup> / <sub>2</sub>	8		A53
1		1	a222		L3x3x1/4	9	10 <sup>1</sup> / <sub>4</sub>	48		A36
1		1	a138		L3x3x1/4	9	10 <sup>1</sup> / <sub>4</sub>	48		A36
2		2	a210		L3x3x1/4	0	8	7		A36
2		2	a18		L3x3x1/4	0	8	7		A36
2		2	p251		PL 1/2x3	0	7	6		A36



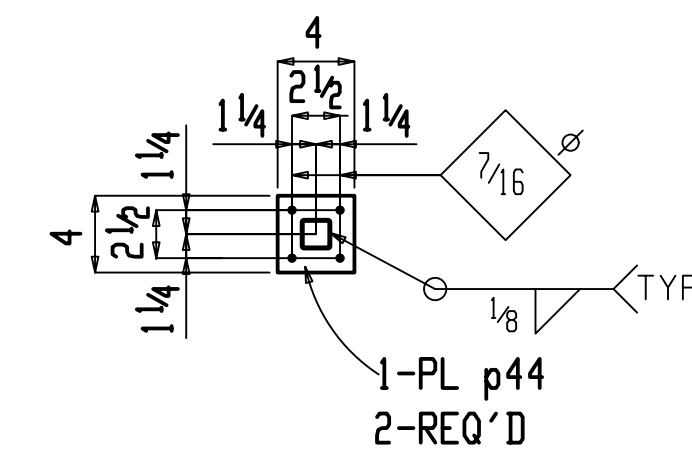




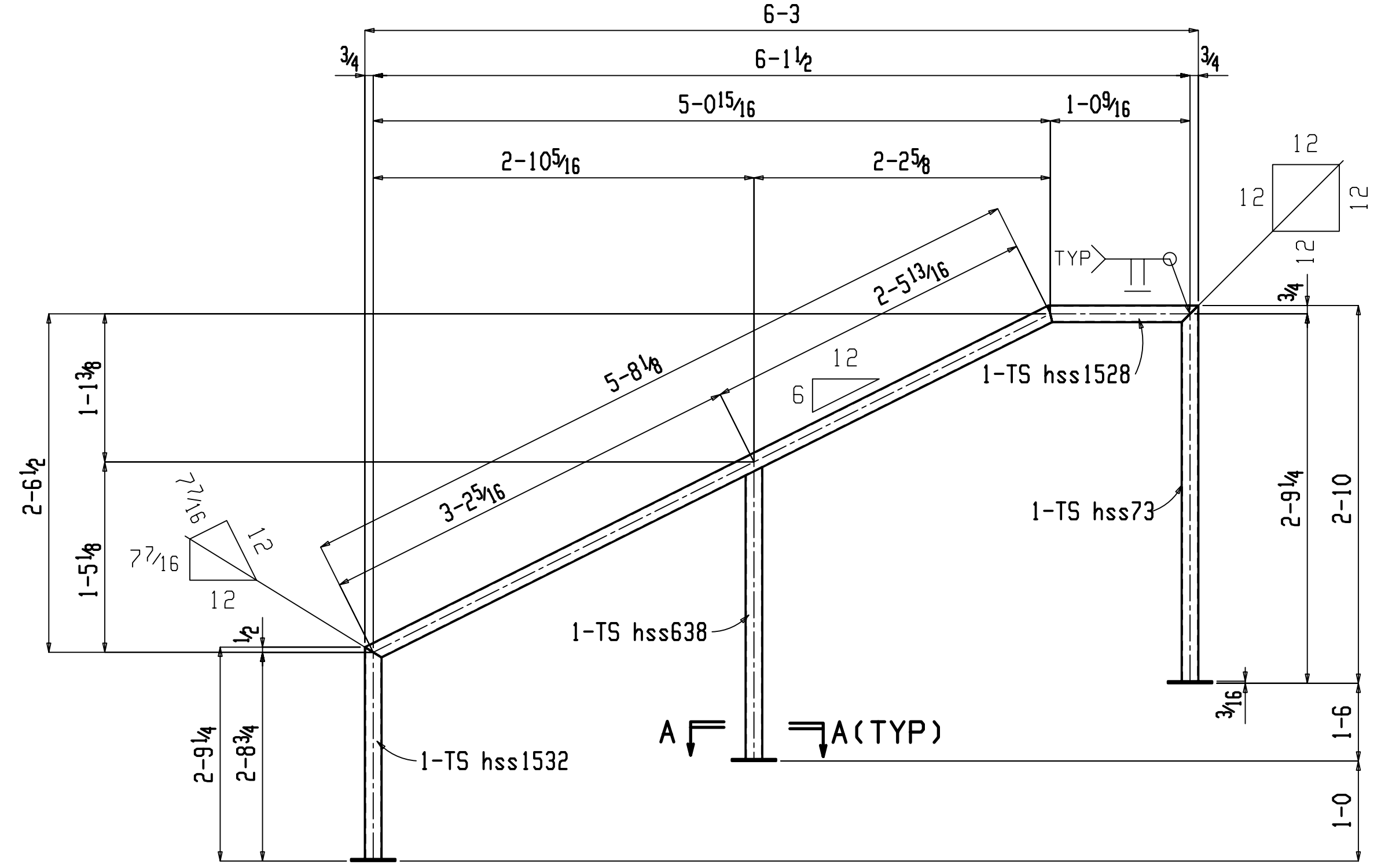




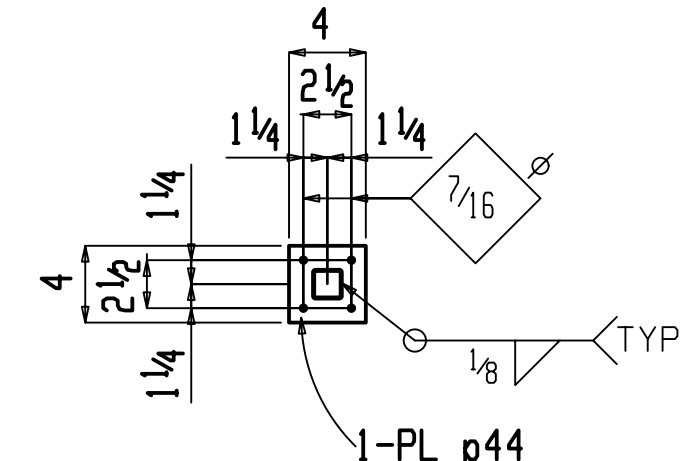
**8 HANDRAILS 8HR1**



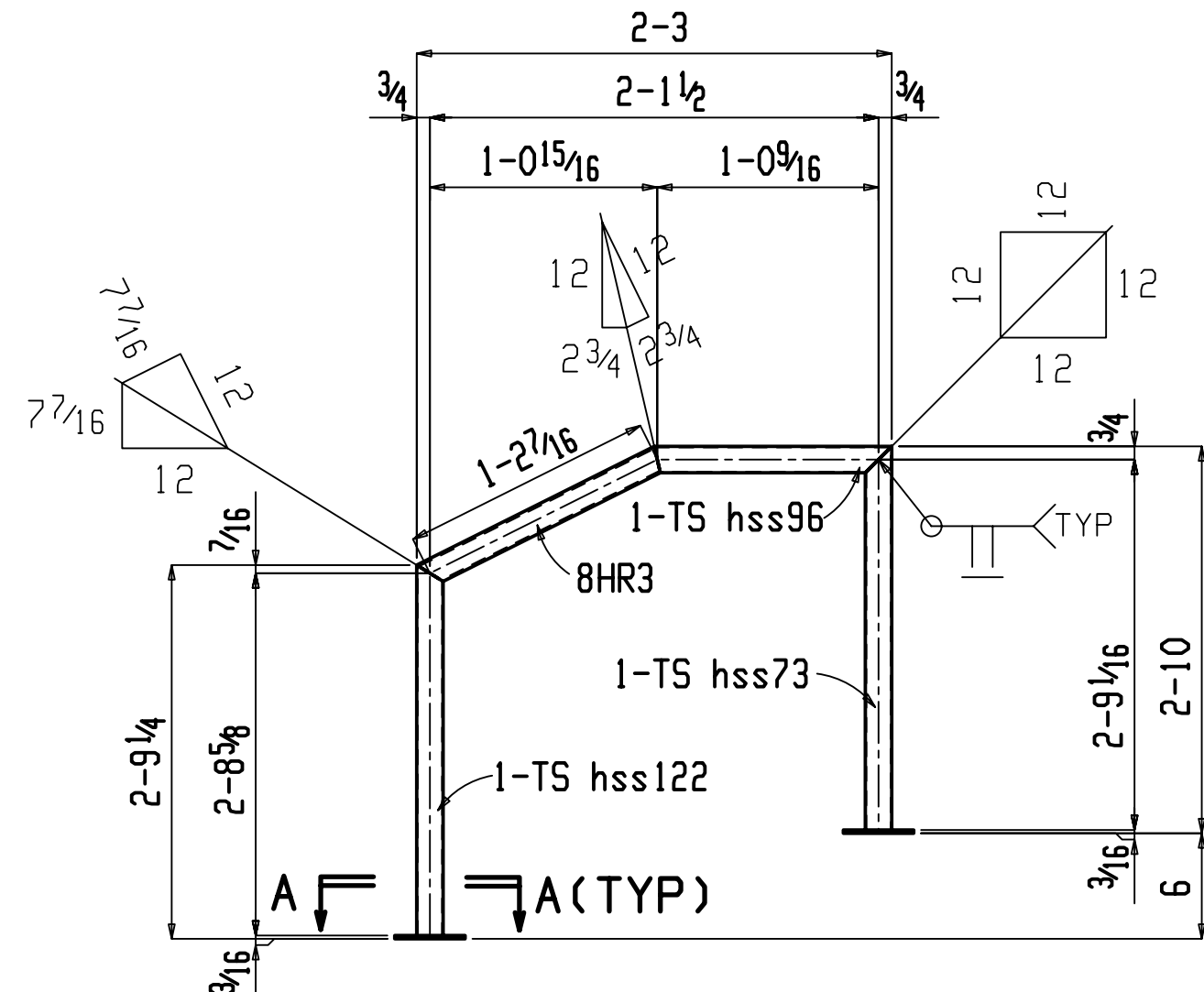
**Section A-A**  
8HR1



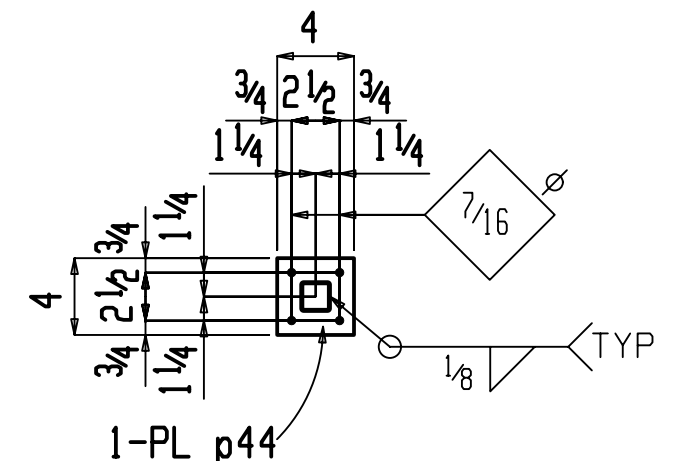
**2 HANDRAILS 8HR2**



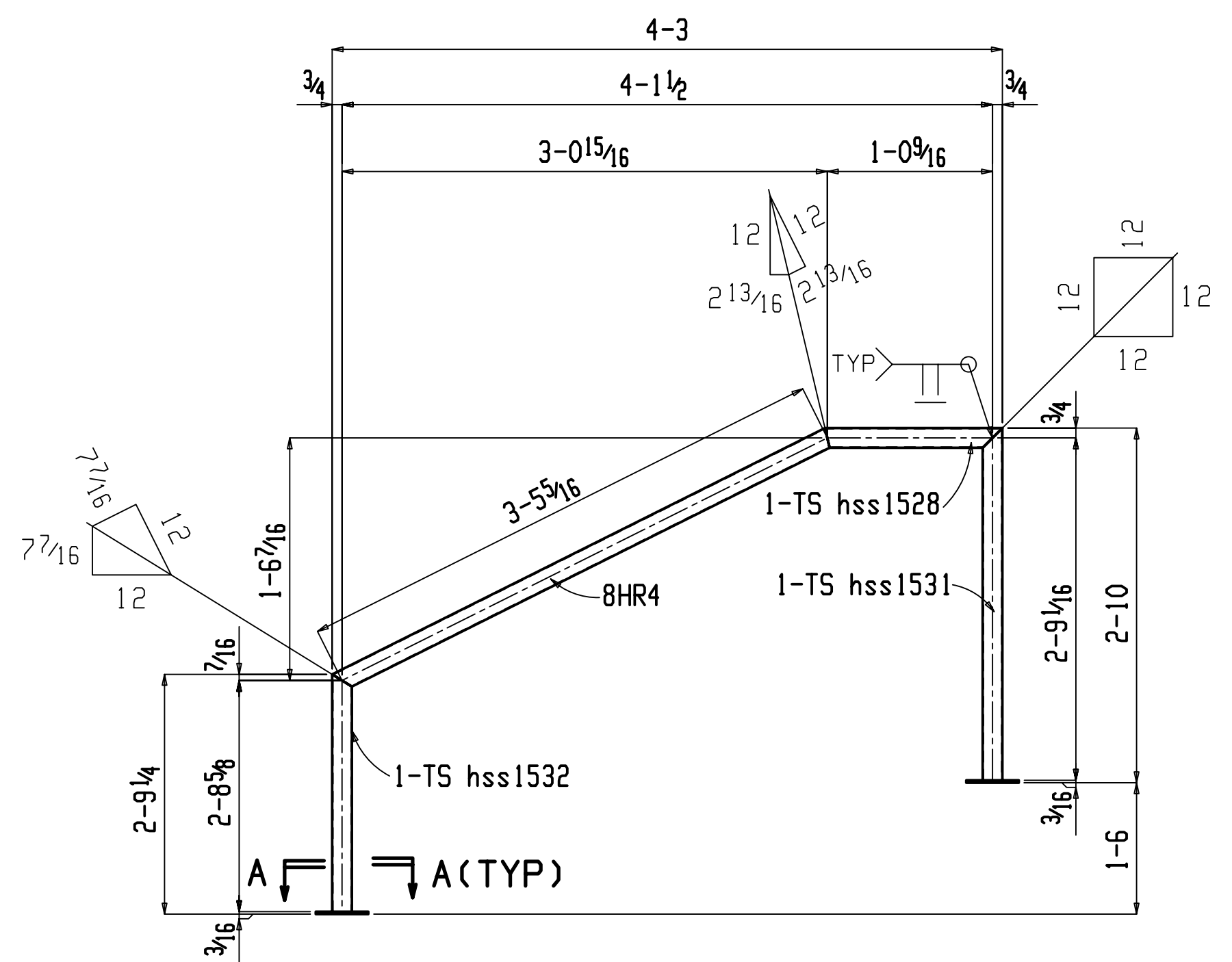
**Section A-A**  
8HR2



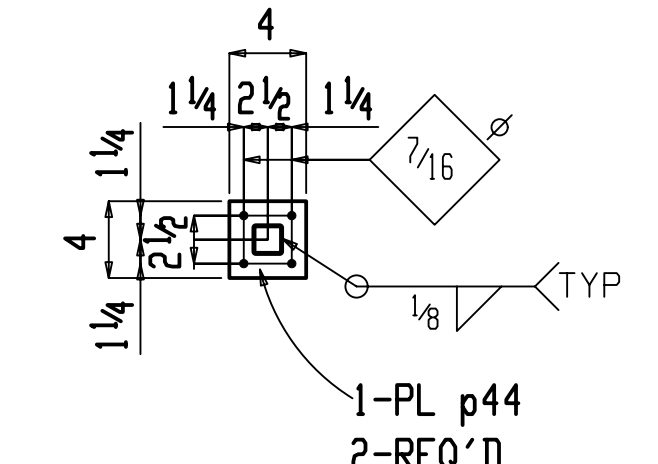
**2 HANDRAILS 8HR3**



**Section A-A**  
8HR3



**2 HANDRAILS 8HR4**



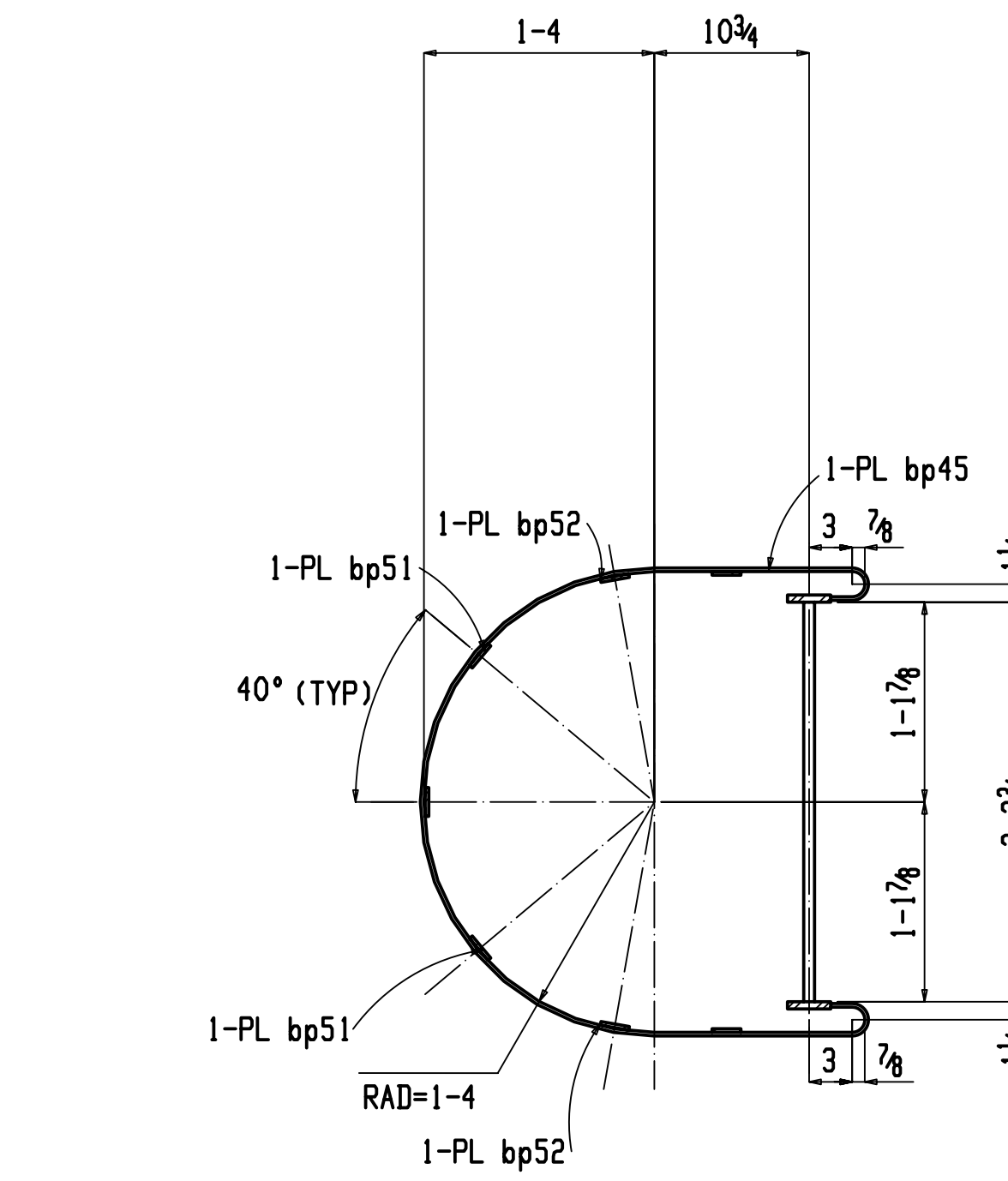
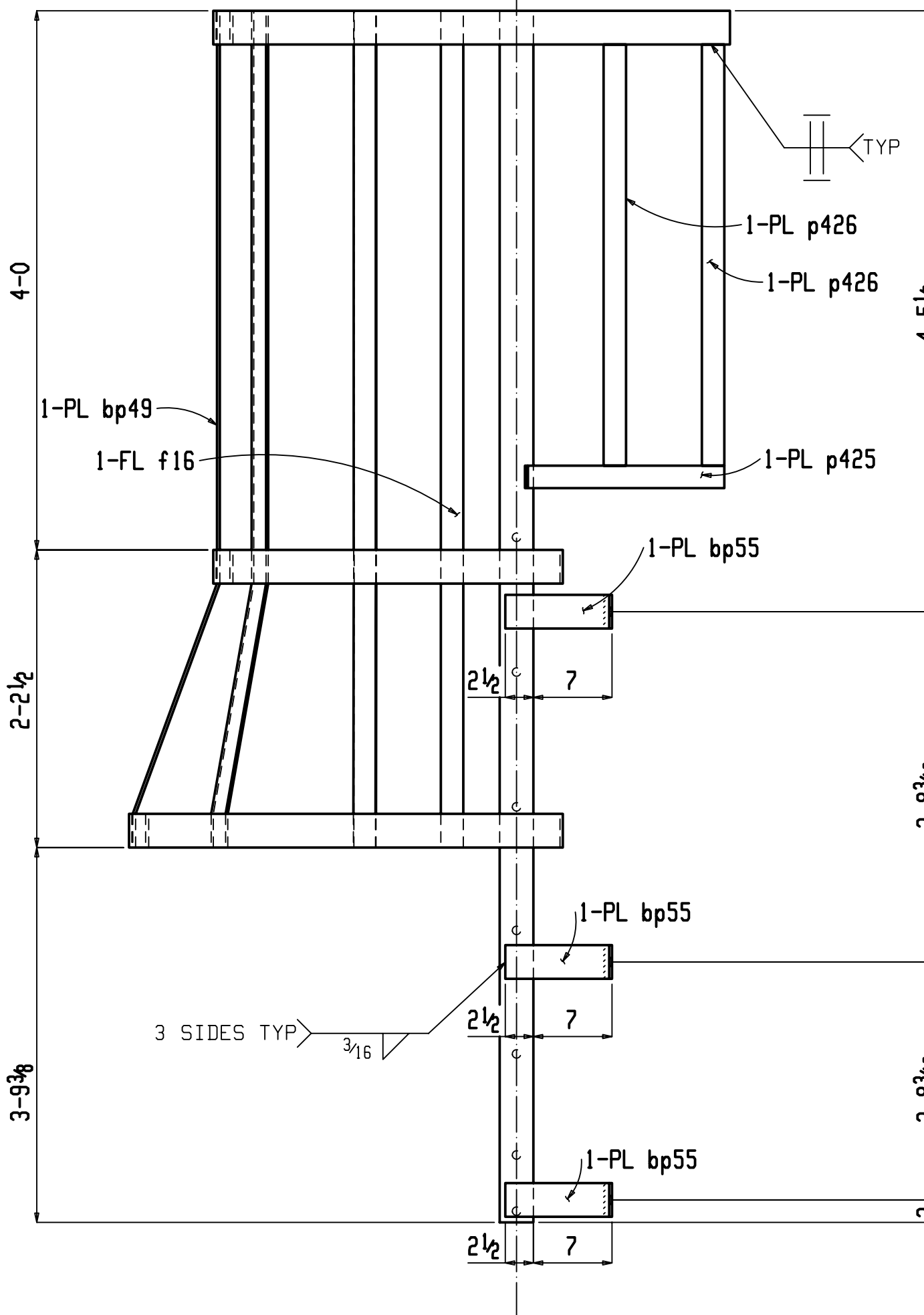
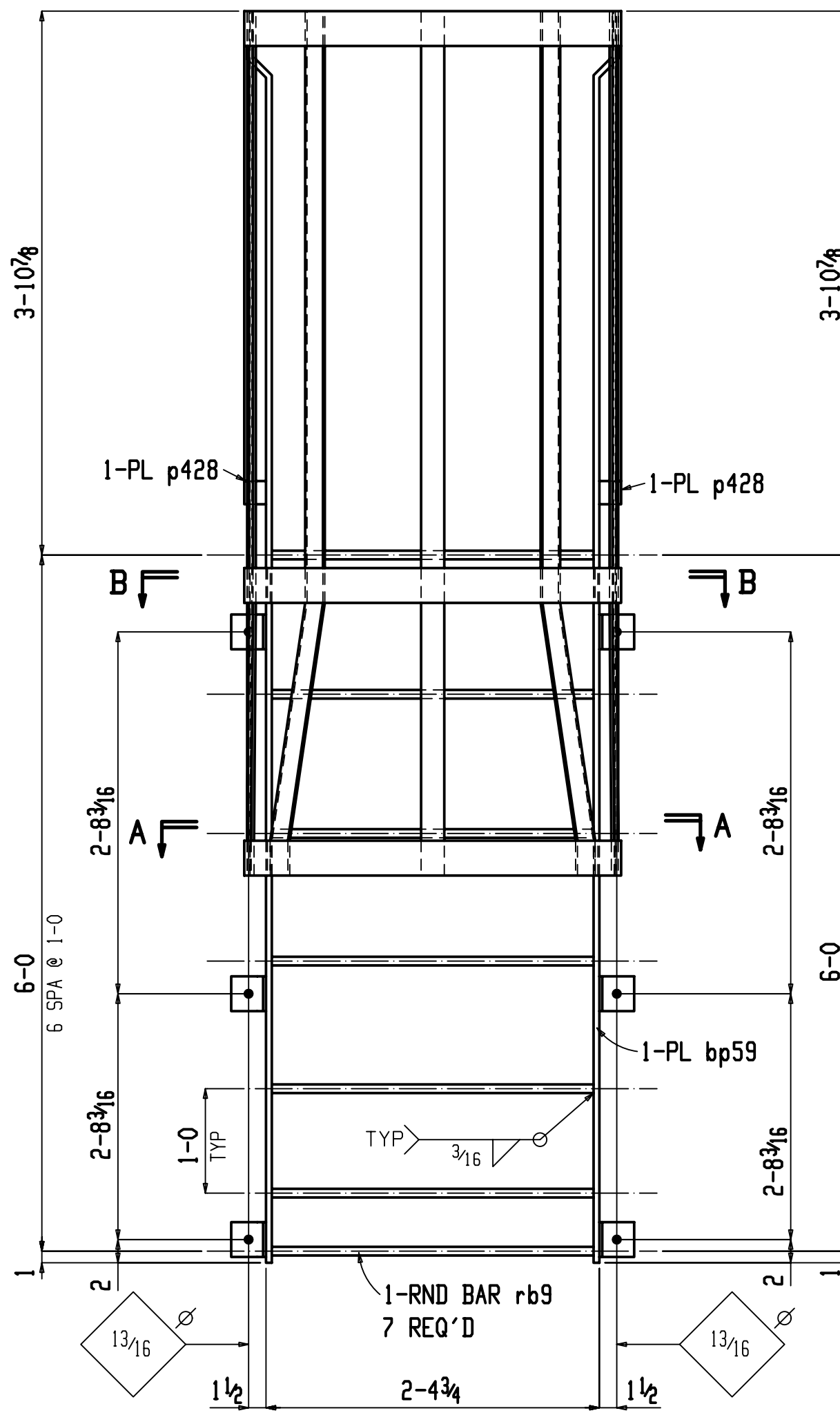
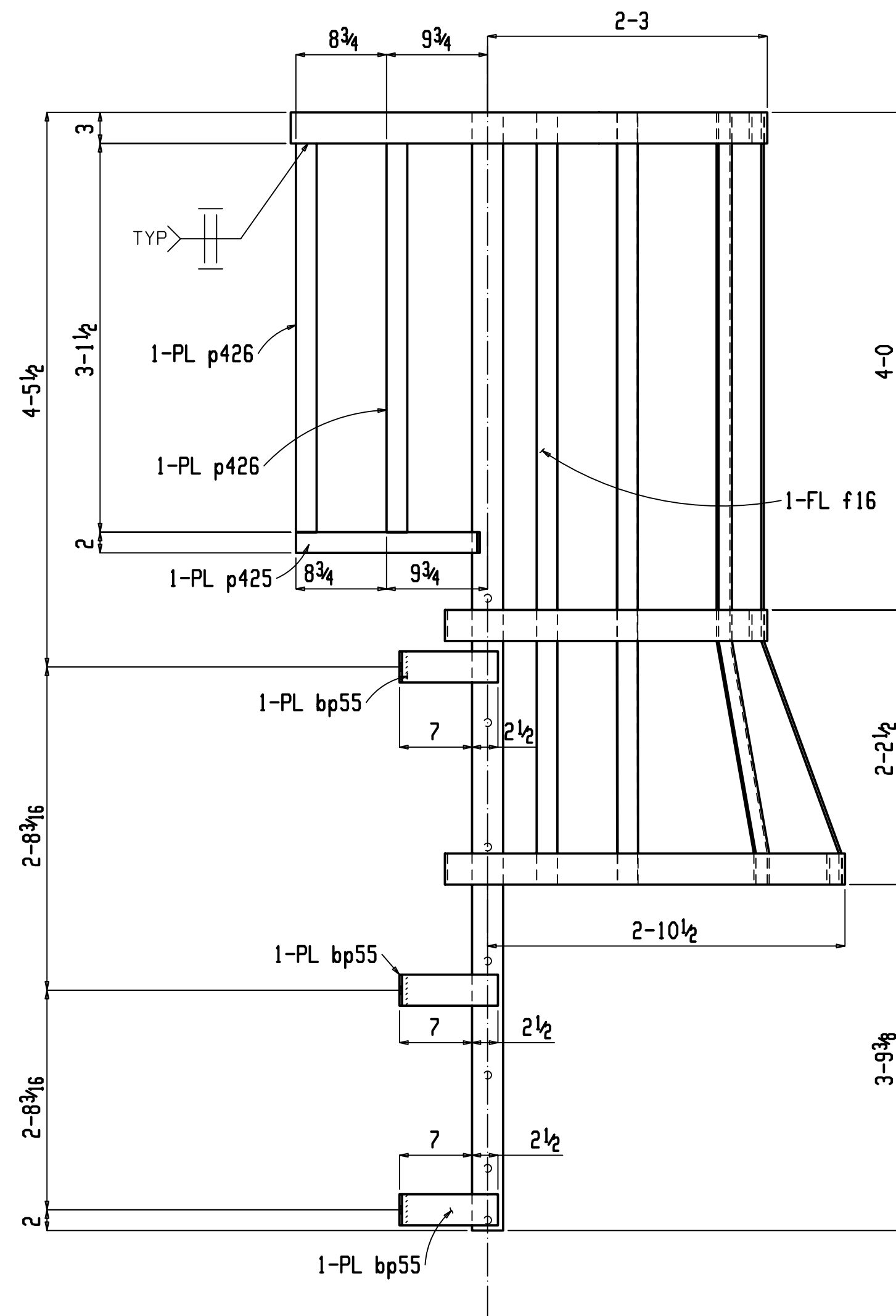
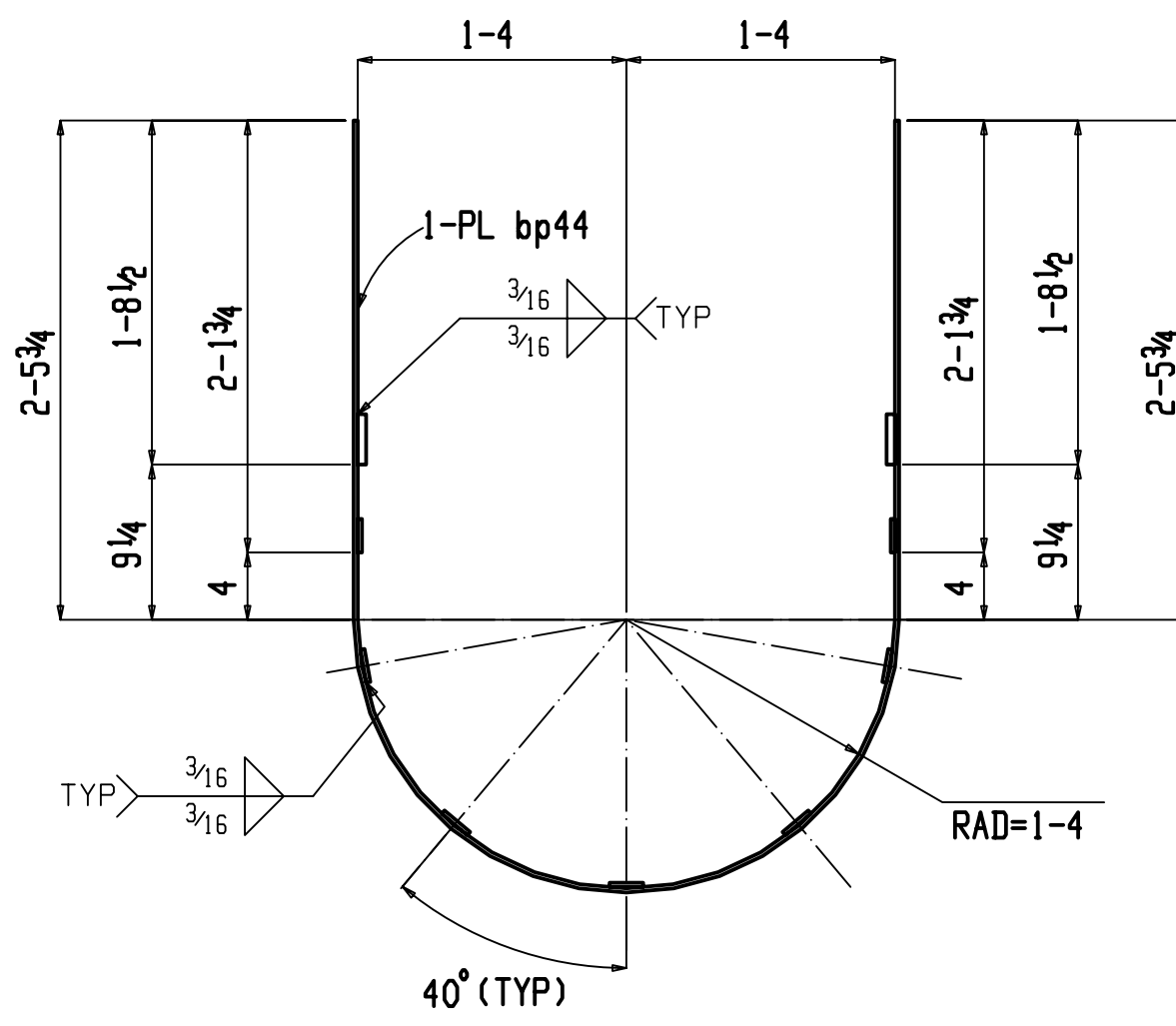
**Section A-A**  
8HR4

BILL OF MATERIAL					
QTY	PC	DESCRIPTION	GRADE	LENGTH	WEIGHT
TOTAL	MARK				TOTAL
8	BHR1	HANDRAIL			157
8	BHR1	TS1 1/2x1 1/2x16GA	A500B	2-4 1/2	37
8	hss1531	TS1 1/2x1 1/2x16GA	A500B	2-9 13/16	44
8	hss1532	TS1 1/2x1 1/2x16GA	A500B	2-9 1/16	43
8	hss1528	TS1 1/2x1 1/2x16GA	A500B	1-1 1/2	18
16	p44	PL 3/16x4	A36	4	14
		FILED BOLT			
64		3/8" DIA EXP ANCHOR		4	
		3/2" EMBEDMENT			
2	BHR2	HANDRAIL			66
2	BHR2	TS1 1/2x1 1/2x16GA	A500B	5-8 3/4	23
2	hss638	TS1 1/2x1 1/2x16GA	A500B	3-1 1/4	12
2	hss73	TS1 1/2x1 1/2x16GA	A500B	2-9 13/16	11
2	hss1532	TS1 1/2x1 1/2x16GA	A500B	2-9 1/16	11
2	hss1528	TS1 1/2x1 1/2x16GA	A500B	1-1 1/2	4
6	p44	PL 3/16x4	A36	4	5
		FILED BOLT			
24		3/8" DIA EXP ANCHOR		4	
		3/2" EMBEDMENT			
2	BHR3	HANDRAIL			35
2	BHR3	TS1 1/2x1 1/2x16GA	A500B	1-3 1/16	5
2	hss73	TS1 1/2x1 1/2x16GA	A500B	2-9 13/16	11
2	hss122	TS1 1/2x1 1/2x16GA	A500B	2-9 1/16	11
2	hss96	TS1 1/2x1 1/2x16GA	A500B	1-1 1/2	4
4	p44	PL 3/16x4	A36	4	3
		FILED BOLT			
16		3/8" DIA EXP ANCHOR		4	
		3/2" EMBEDMENT			
2	BHR4	HANDRAIL			44
2	BHR4	TS1 1/2x1 1/2x16GA	A500B	3-5 15/16	14
2	hss1531	TS1 1/2x1 1/2x16GA	A500B	2-9 13/16	11
2	hss1532	TS1 1/2x1 1/2x16GA	A500B	2-9 1/16	11
2	hss1528	TS1 1/2x1 1/2x16GA	A500B	1-1 1/2	4
4	p44	PL 3/16x4	A36	4	3
		FILED BOLT			
16		3/8" DIA EXP ANCHOR		4	
		3/2" EMBEDMENT			

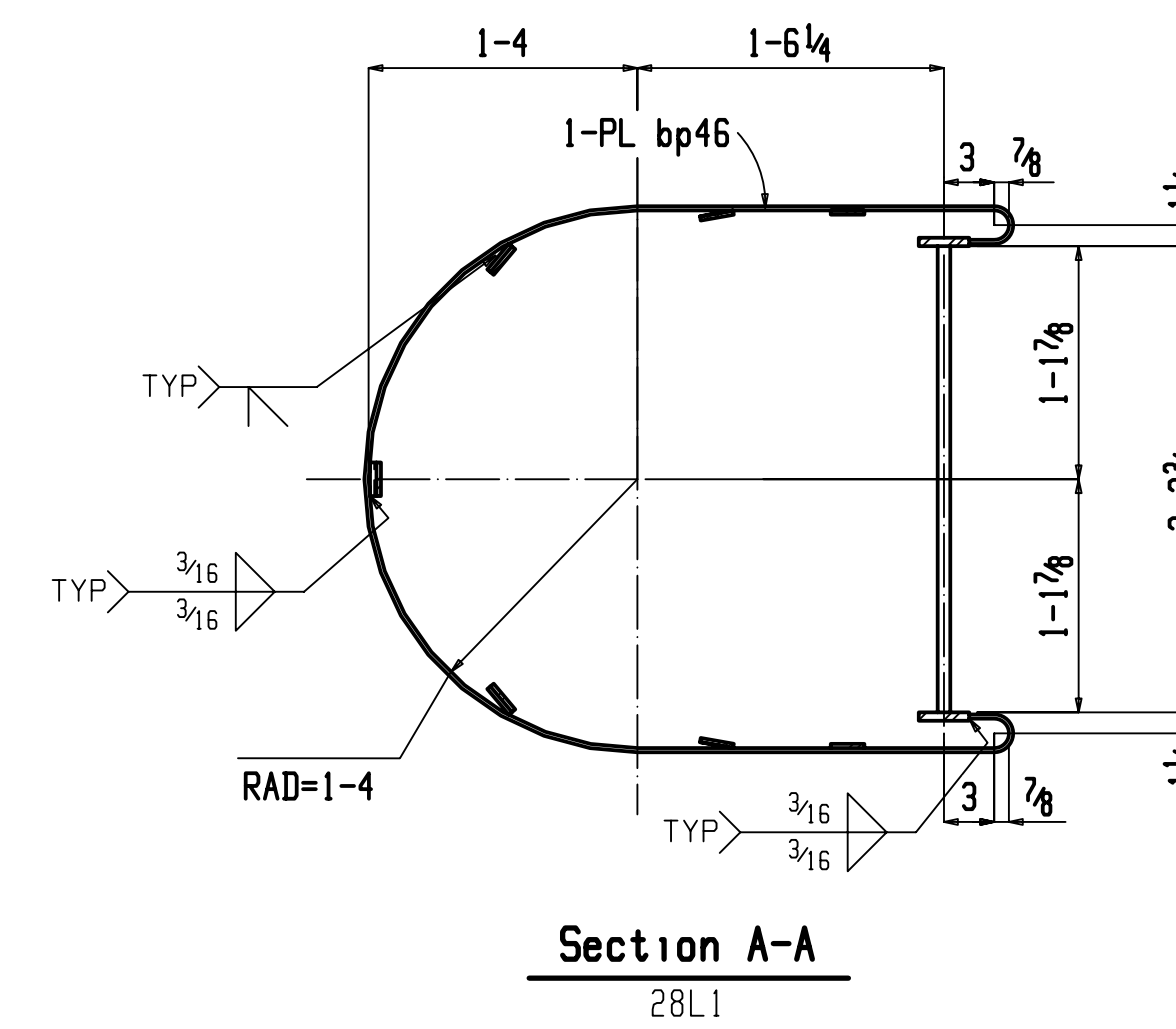








Section B-B  
28L1



Section A-A  
28L1

2 CAGE LADDERS 28L1

BILL OF MATERIAL

QTY	PC	DESCRIPTION	GRADE	LENGTH	WEIGHT
TOTAL	MARK				TOTAL
2	28L1	CAGE LADDER			614
2	28L1	BPL 1/2x3	A572-50	10-09 1/8	103
2	bp59	BPL 1/2x3	A572-50	10-09 1/8	103
12	bp55	BPL 1/4x12	A572-50	3	31
2	bp44	BPL 1/4x3	A572-50	9-2 1/8	47
2	bp46	BPL 1/4x3	A572-50	8-6 3/8	44
2	bp45	BPL 1/4x3	A572-50	7-3 3/8	37
2	bp49	BPL 1/4x2	A572-50	6-3 13/16	22
4	bp51	BPL 1/4x2	A572-50	6-3 1/8	43
4	bp52	BPL 1/4x2	A572-50	6-2 1/2	42
4	f16	FL 1/4x2	A572-50	6-2 1/2	42
8	p426	PL 1/4x2	A572-50	3-1 1/2	43
4	p425	PL 1/4x2	A572-50	1-5 1/2	10
4	p428	PL 1/4x1 7/8	A572-50	2	1
14	rb9	RB 3/4	A572-50	2-3 3/4	49