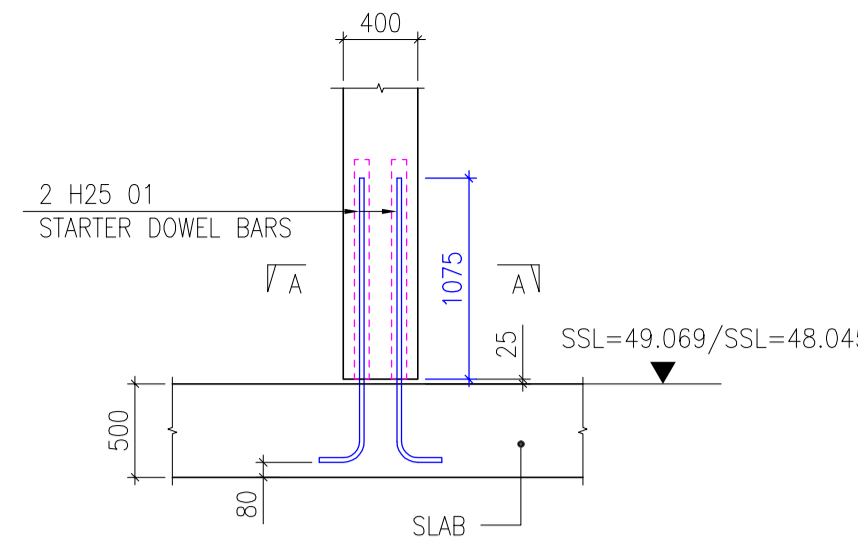


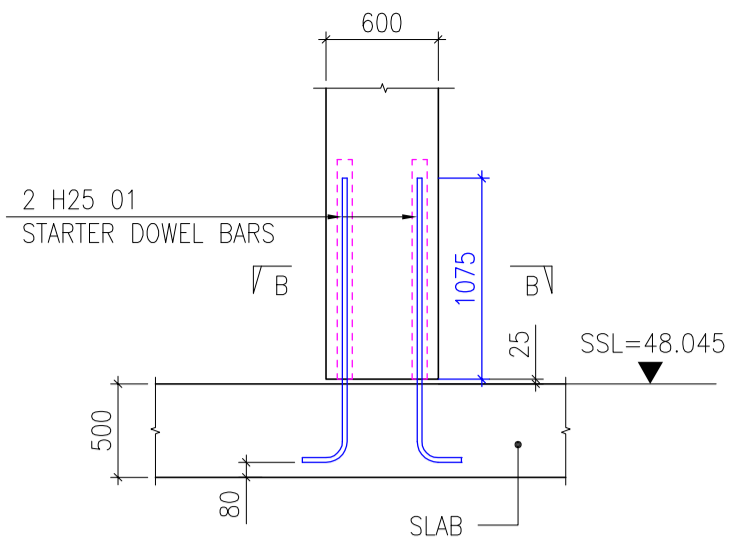
THE INFORMATION CONTAINED IN THIS DRAWING IS FOR REFERENCE ONLY AND IS WITHOUT CHARGE, LIABILITY OR RESPONSIBILITY

NOTES:

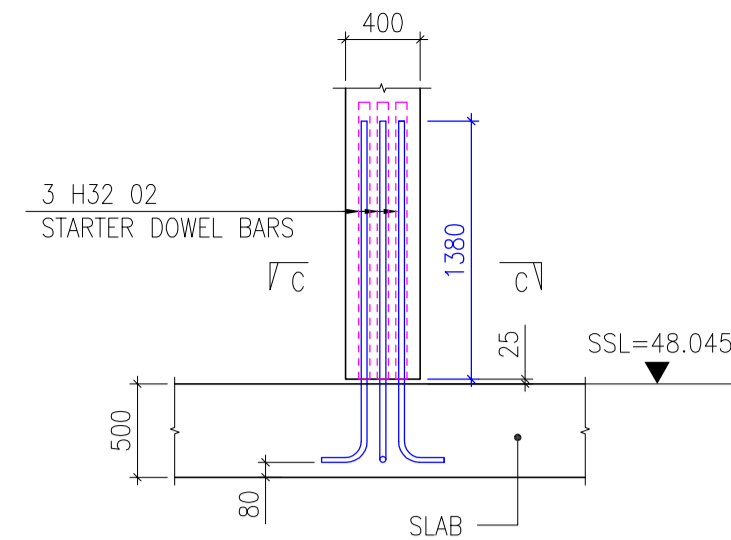
- ALL DIMENSIONS IN MILLIMETERS UNLESS STATED OTHERWISE
- THIS DRAWING TO BE READ IN CONJUNCTION WITH ALL OTHER RELEVANT ENGINEER'S AND ARCHITECTS DRAWINGS AND SPECIFICATIONS.
- CONCRETE TO BE DESIGNATE RC60 IN ACCORDANCE WITH BS8110. REFER TO SPECIFICATION.
- GROUT TO BE DESIGNATE 60 NMMF. REFER TO SPECIFICATION.
- CONCRETE COVER TO BE: ALL FACES - 30 MM
- LAP LENGTHS:
 H10 - 430MM
 H12 - 520MM
 H16 - 690MM
 H20 - 860MM
 H25 - 1075MM
 H32 - 1380MM
 H40 - 1720MM
 UNLESS OTHERWISE NOTED



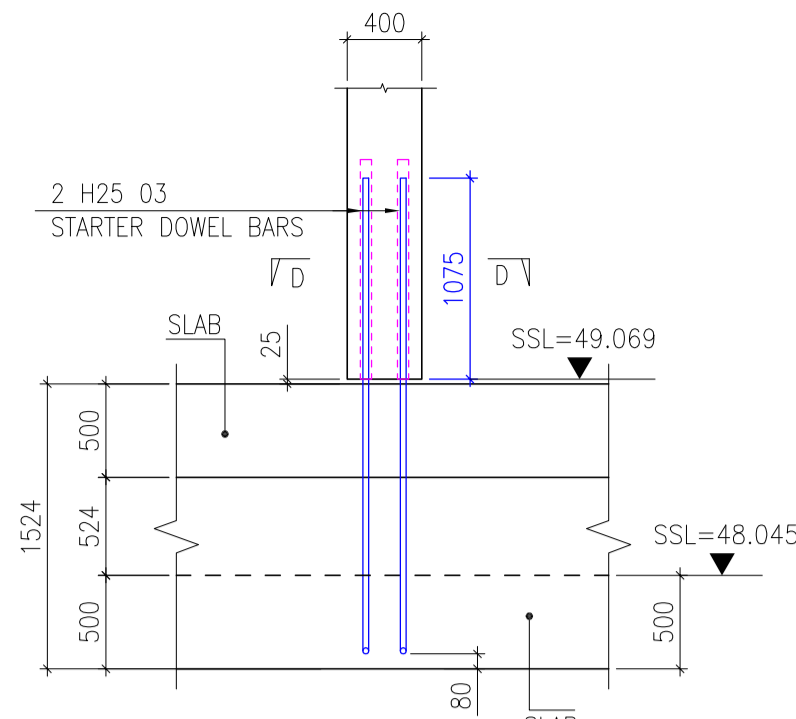
TYPICAL CONNECTION DETAIL
COLUMN BASE
SCALE 1:40
TYPE-01
(NOS-70)



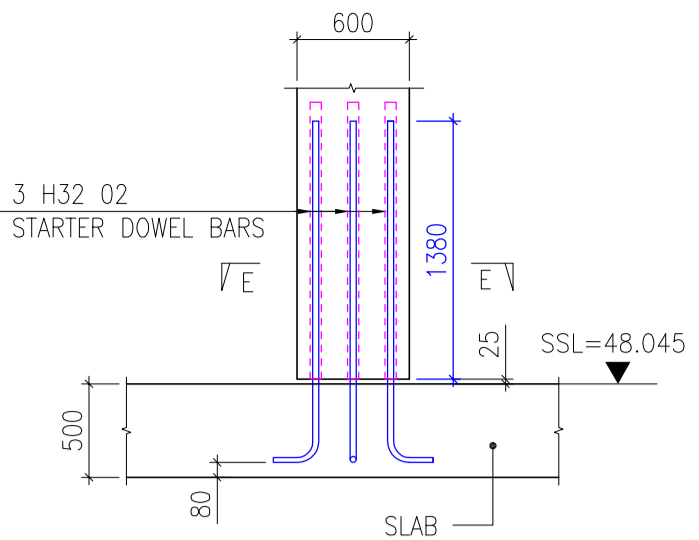
TYPICAL CONNECTION DETAIL
COLUMN BASE
SCALE 1:40
TYPE-02
(NOS-06)



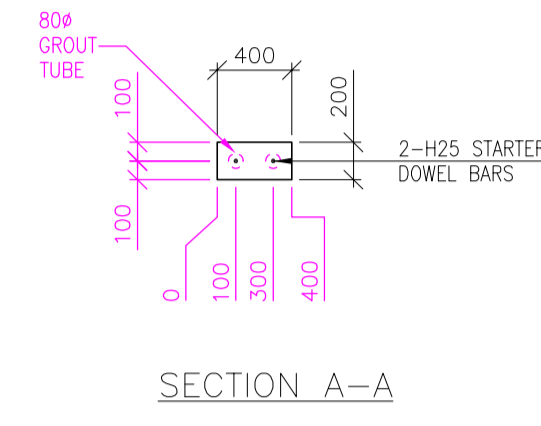
TYPICAL CONNECTION DETAIL
COLUMN BASE
SCALE 1:40
TYPE-03
(NOS-17)



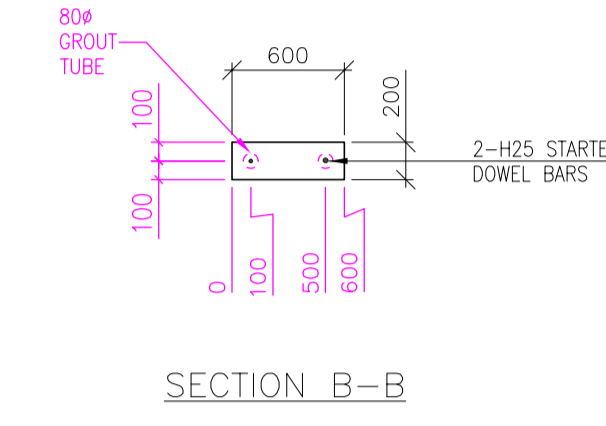
TYPICAL CONNECTION DETAIL
COLUMN BASE
SCALE 1:40
TYPE-04
(NOS-02)



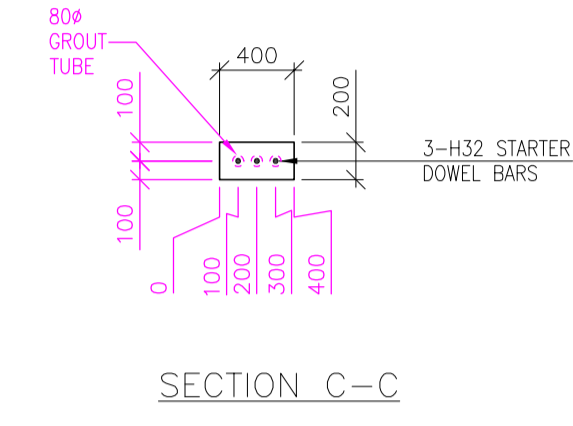
TYPICAL CONNECTION DETAIL
COLUMN BASE
SCALE 1:40
TYPE-05
(NOS-02)



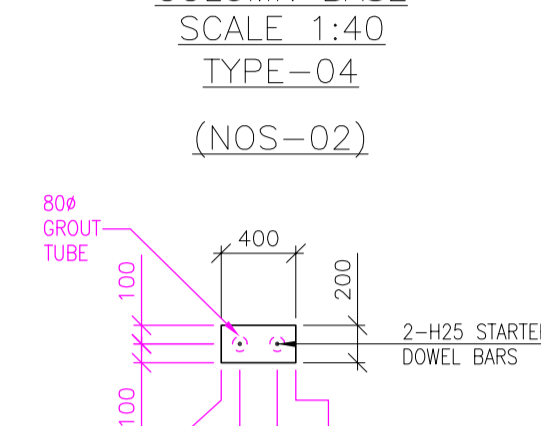
SECTION A-A



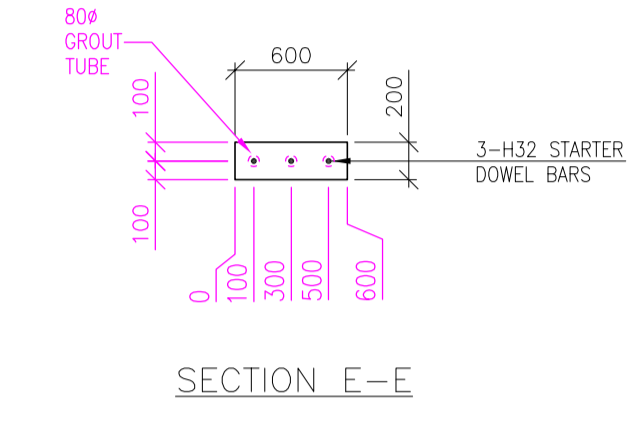
SECTION B-B



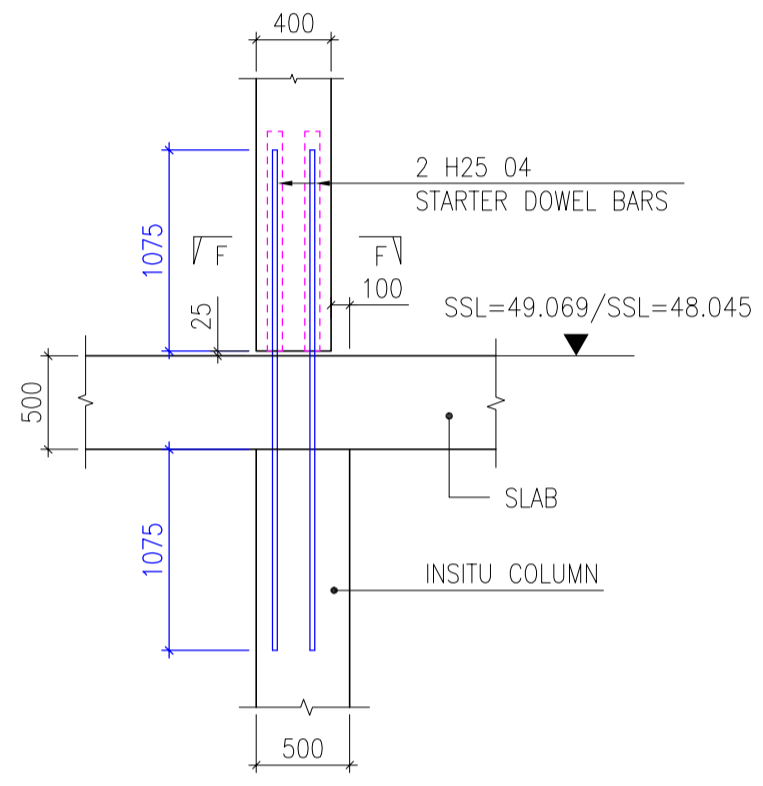
SECTION C-C



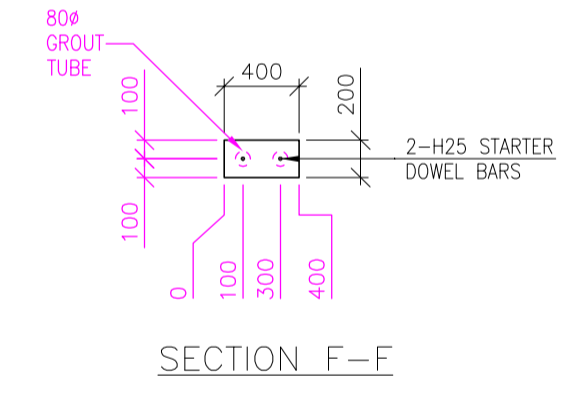
SECTION D-D



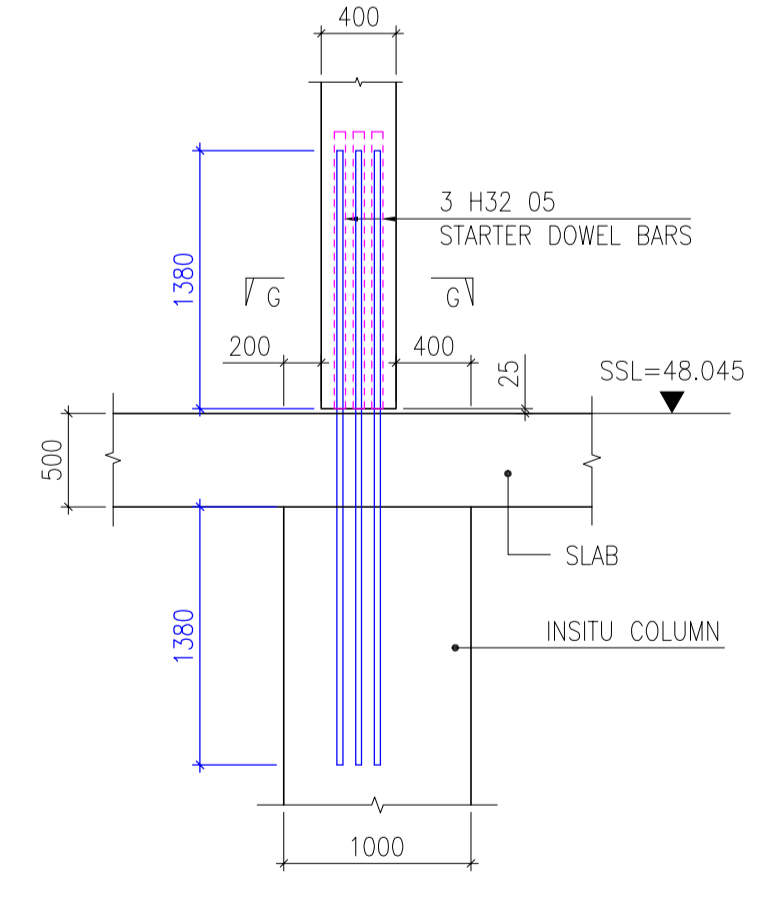
SECTION E-E



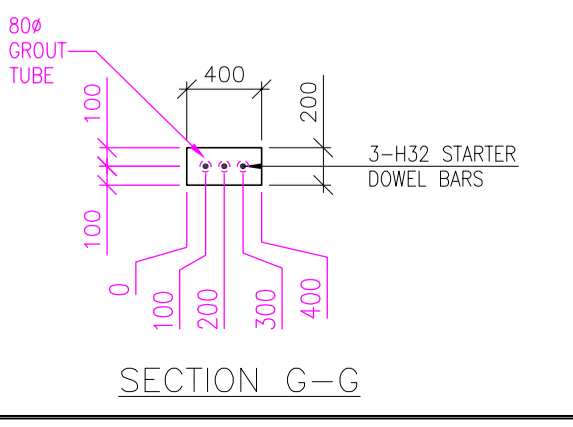
TYPICAL CONNECTION DETAIL
COLUMN BASE
SCALE 1:40
TYPE-06
(NOS-03)



SECTION F-F

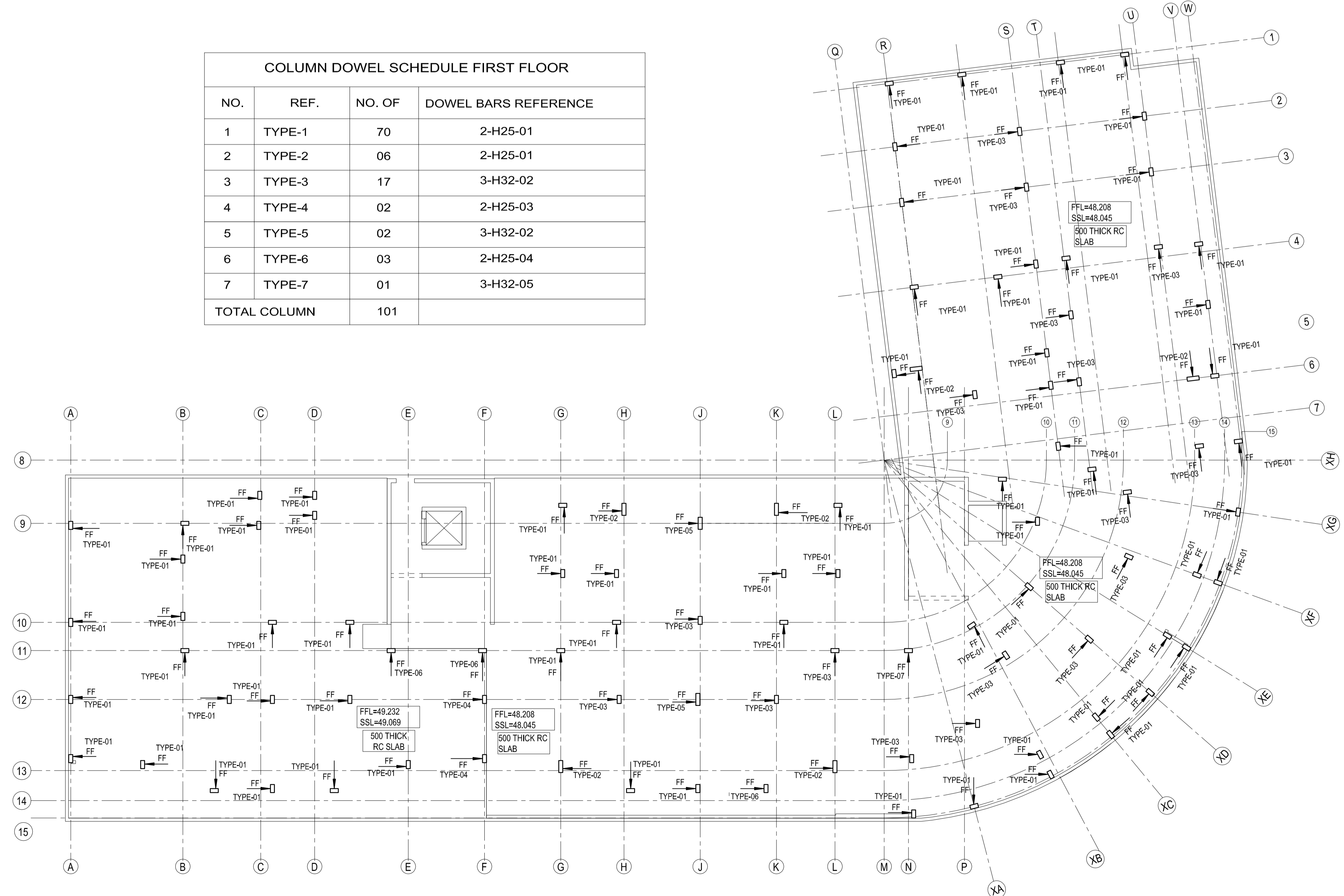


TYPICAL CONNECTION DETAIL
COLUMN BASE
SCALE 1:40
TYPE-07
(NOS-01)



SECTION G-G

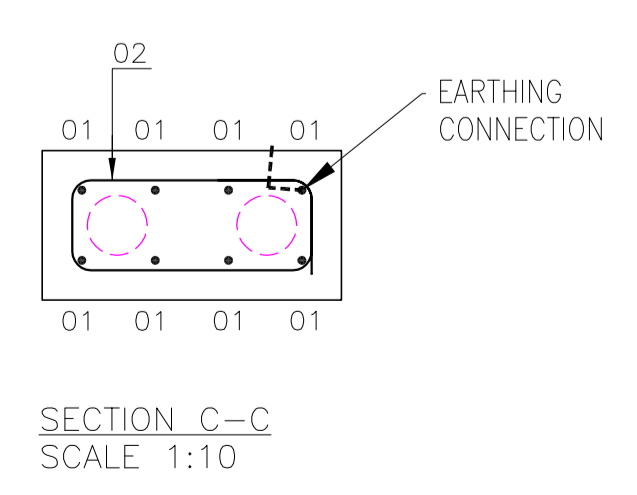
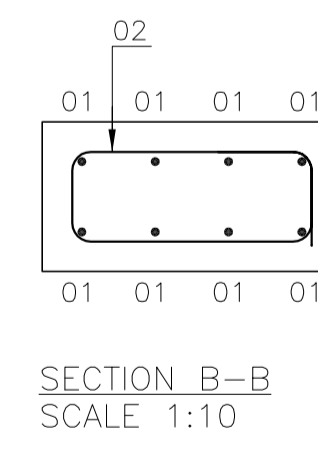
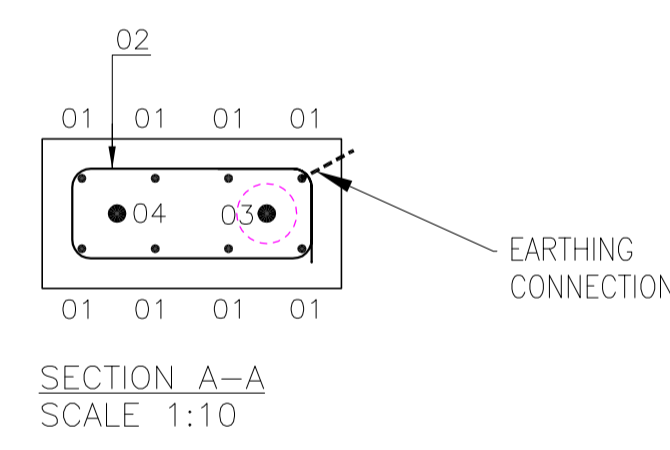
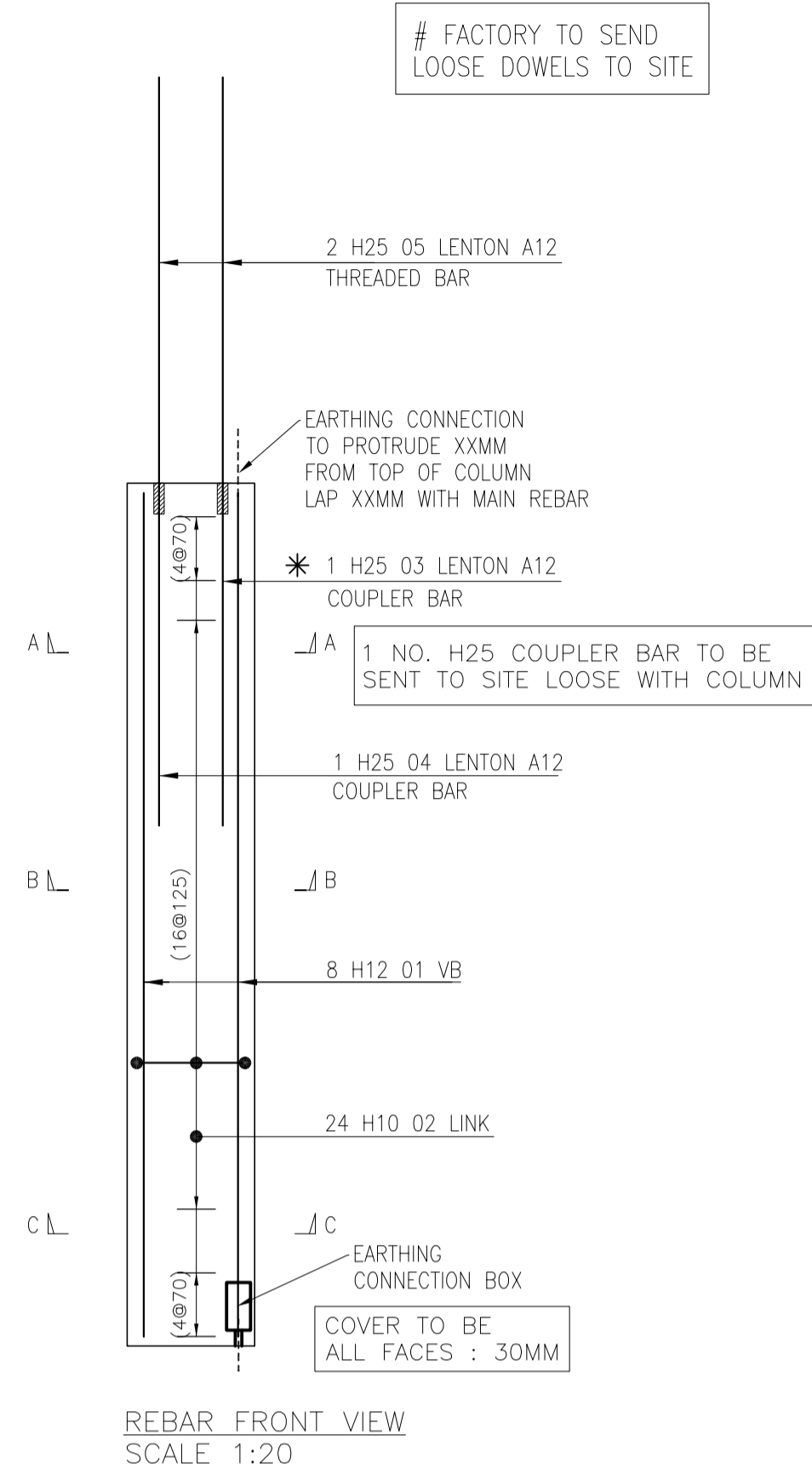
COLUMN DOWEL SCHEDULE FIRST FLOOR			
NO.	REF.	NO. OF	DOWEL BARS REFERENCE
1	TYPE-1	70	2-H25-01
2	TYPE-2	06	2-H25-01
3	TYPE-3	17	3-H32-02
4	TYPE-4	02	2-H25-03
5	TYPE-5	02	3-H32-02
6	TYPE-6	03	2-H25-04
7	TYPE-7	01	3-H32-05
TOTAL COLUMN		101	



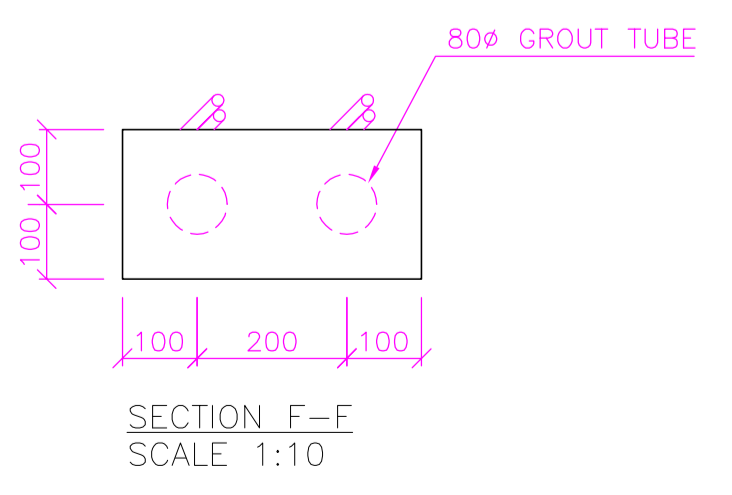
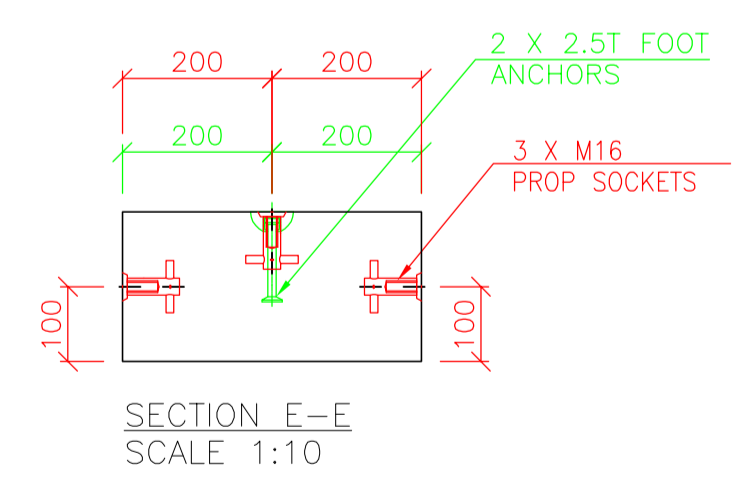
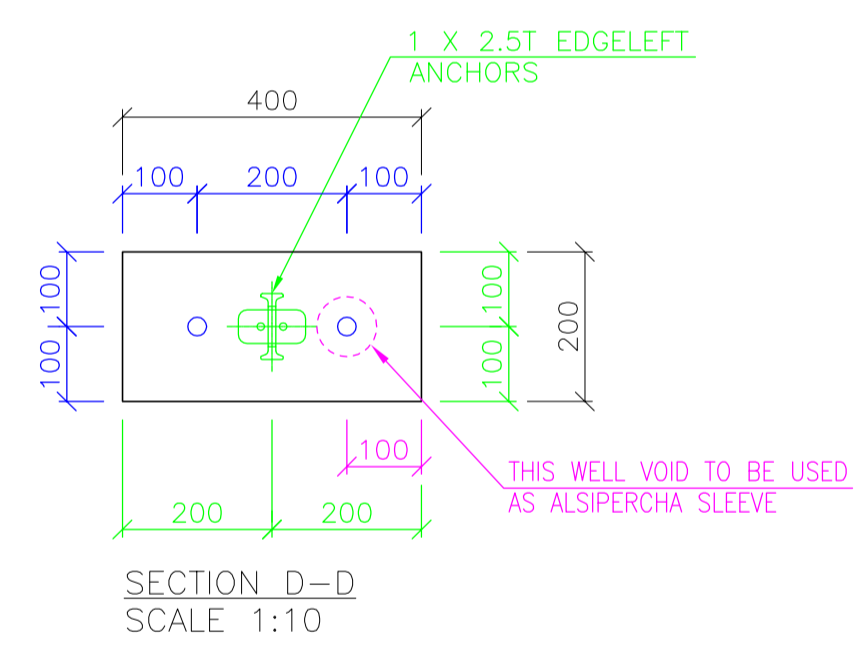
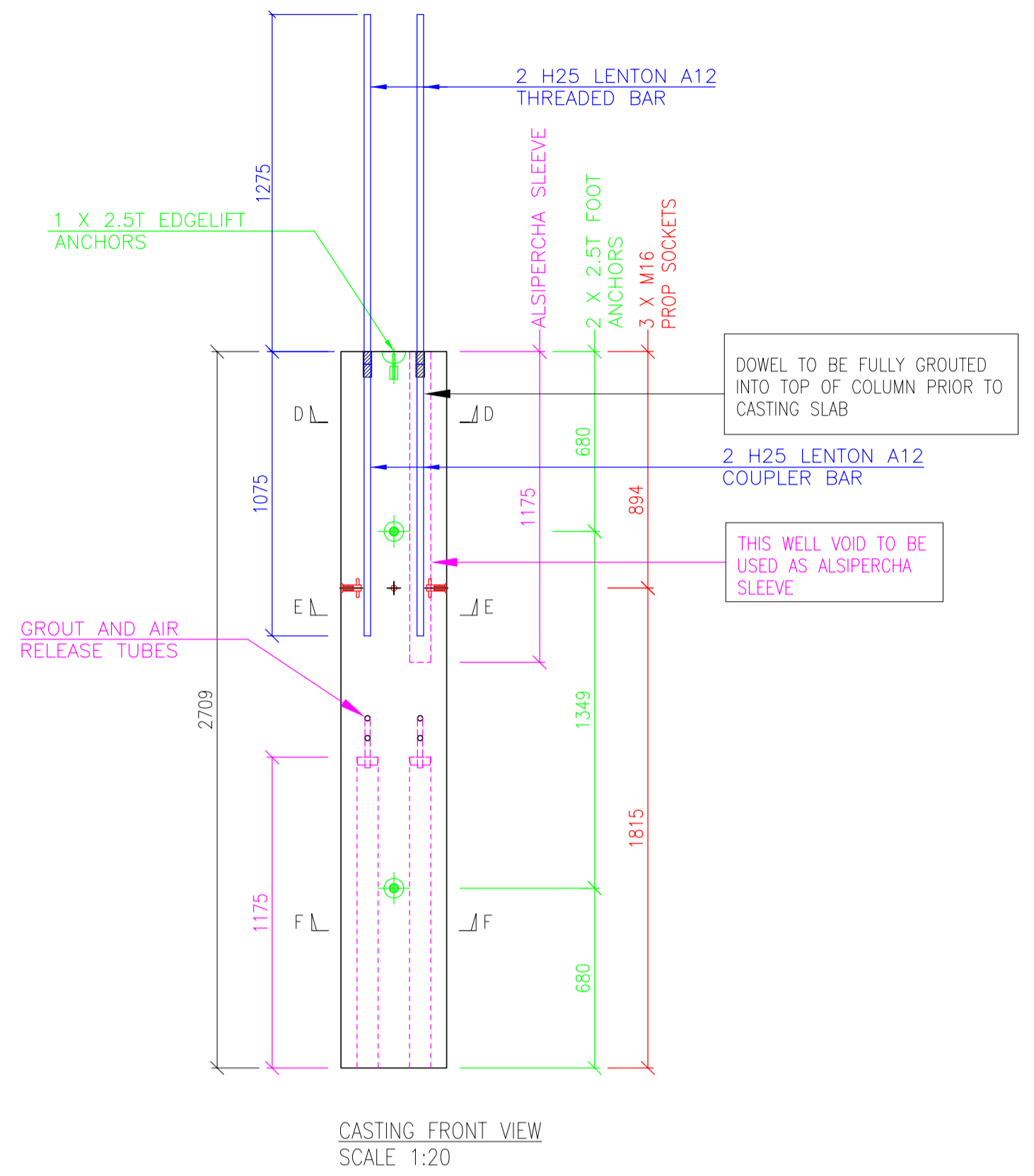
FIRST FLOOR COLUMN DOWEL LAYOUT
(SCALE 1:200)

P1	ISSUED FOR APPROVAL			
REV	BY	CHK	DATE	AMMENDMENTS
TITLE:		PRECAST COLUMN DOWEL LAYOUT- FIRST FLOOR		
PROJECT:				
CLIENT:				
STATUS:		APPROVAL		
DRN:	CHK:	DATE:		
DWG NO:	SCALE:	PAPER SIZE:		

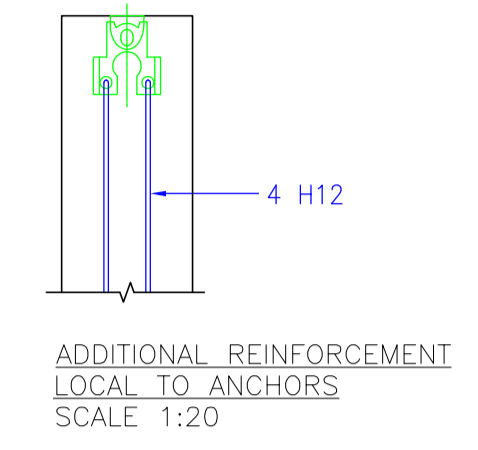
REINFORCEMENT DETAILS



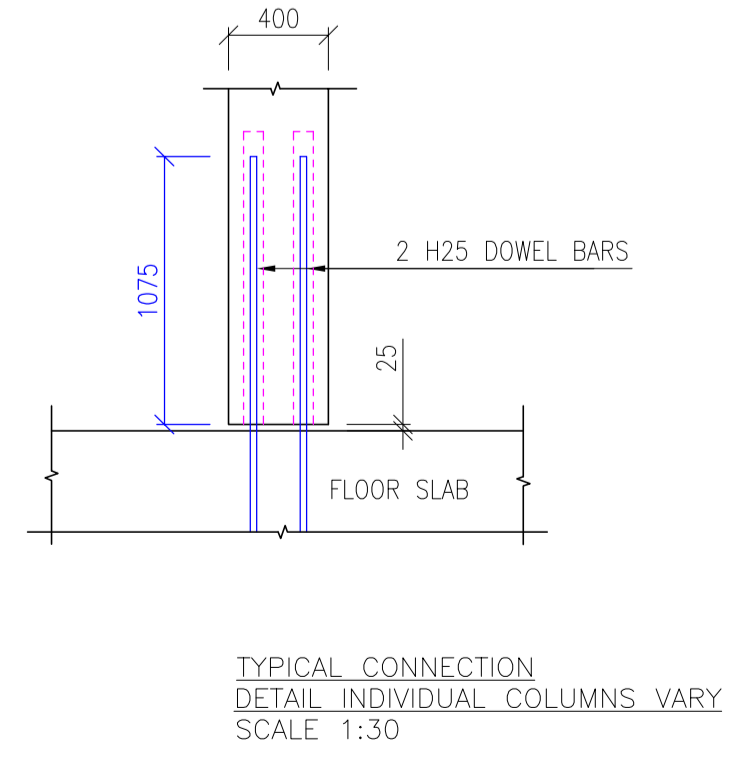
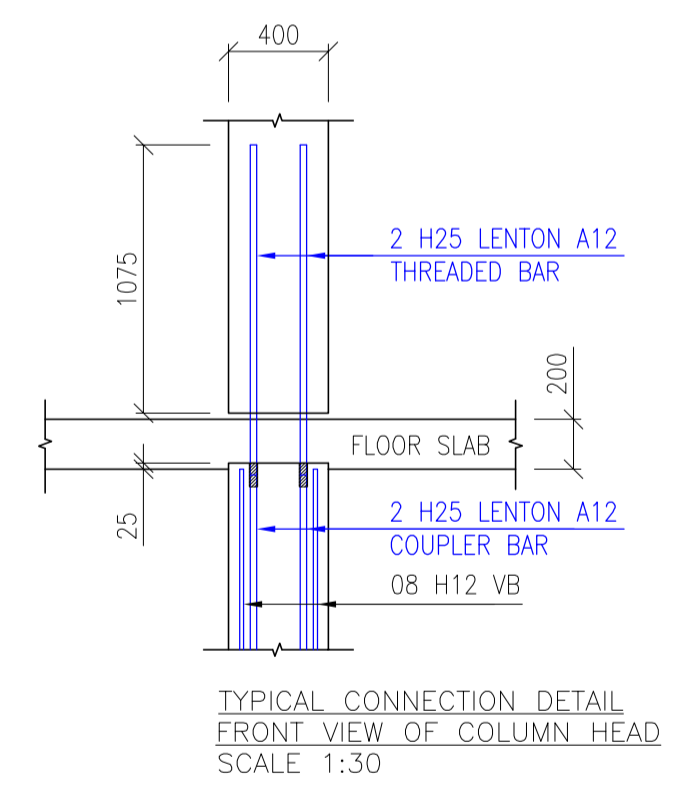
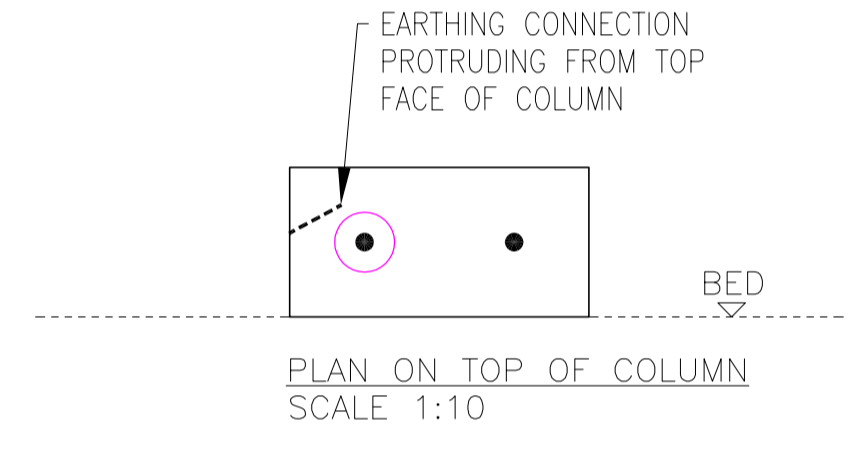
PRECAST COLUMN DETAILS



PRECAST COLUMN TYPE	
CALL OFF	URN
DATE	TIME



INSTALLATION PARTS COLUMN		
NO. OF.	DESCRIPTION	SYMBOL
1	2.5T EDGELIFT ANCHOR	⚡/⚡
2	2.5T SWIFTLIFT FOOT ANCHOR	⚡/⚡
2	80# GROUT TUBE	⊕
3	M16 x 75 SOLID ROD SOCKETS	+ / ↓
1	80# ALSIPERCHA SLEEVE	⊕
2	H25 COUPLER/THREADED BAR	— / —



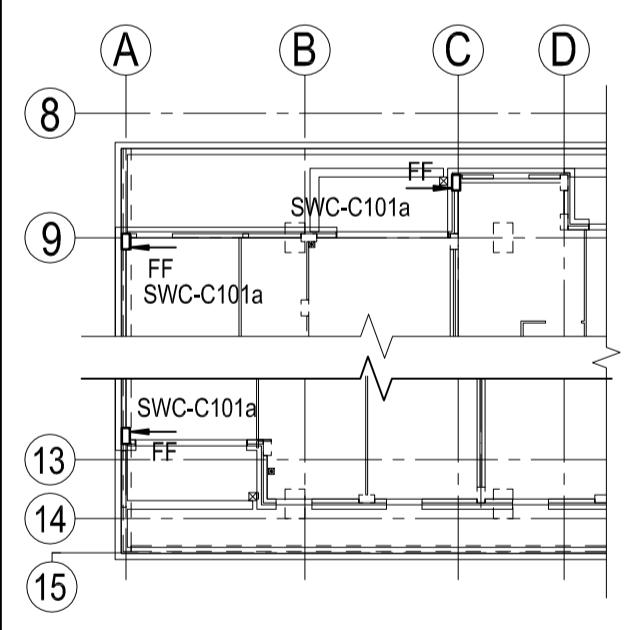
THE INFORMATION CONTAINED IN THIS DRAWING IS FOR REFERENCE ONLY AND IS WITHOUT CHARGE, LIABILITY OR RESPONSIBILITY

- NOTES:
- ALL DIMENSIONS IN MILLIMETERS UNLESS STATED OTHERWISE
 - THIS DRAWING IS TO BE READ IN CONJUNCTION WITH THE FOLLOWING GENERAL ARRANGEMENT DRAWINGS: 461SWC-KPC01

REINFORCED CONCRETE NOTES

- THIS DRAWING IS TO BE READ IN CONJUNCTION WITH ALL OTHER RELEVANT ENGINEER'S AND ARCHITECT'S DRAWINGS AND SPECIFICATIONS.

- CONCRETE TO BE DESIGNATE RC60 IN ACCORDANCE WITH BS8110. REFER TO SPECIFICATION.
- GROUT TO BE DESIGNATE 60 NMMF. REFER TO SPECIFICATION.
- CONCRETE COVER TO BE: ALL FACES - 30 MM.
- LAP LENGTHS:
H10 - 430MM
H12 - 520MM
H16 - 690MM
H20 - 860MM
H25 - 1075MM
H32 - 1360MM
H40 - 1720MM
UNLESS OTHERWISE NOTED.
- TOTAL REINFORCEMENT WEIGHT = 53kg
- UNIT CUBE = 0.22 m3
- UNIT WEIGHT = 0.58 T



P1	ISSUED FOR APPROVAL			
REV	BY	CHK	DATE	AMMENDMENTS
TITLE:		PRECAST COLUMN		
PROJECT:				
CLIENT:				
STATUS:		APPROVAL		
DRN:	CHK:	DATE:		
DWG NO:	SCALE:	PAPER SIZE:		
		A1		

PRECAST WALL TYPE -

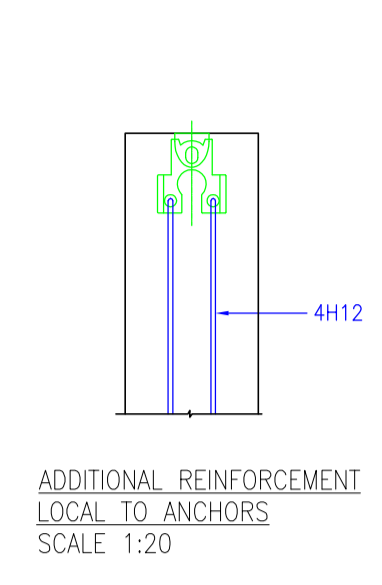
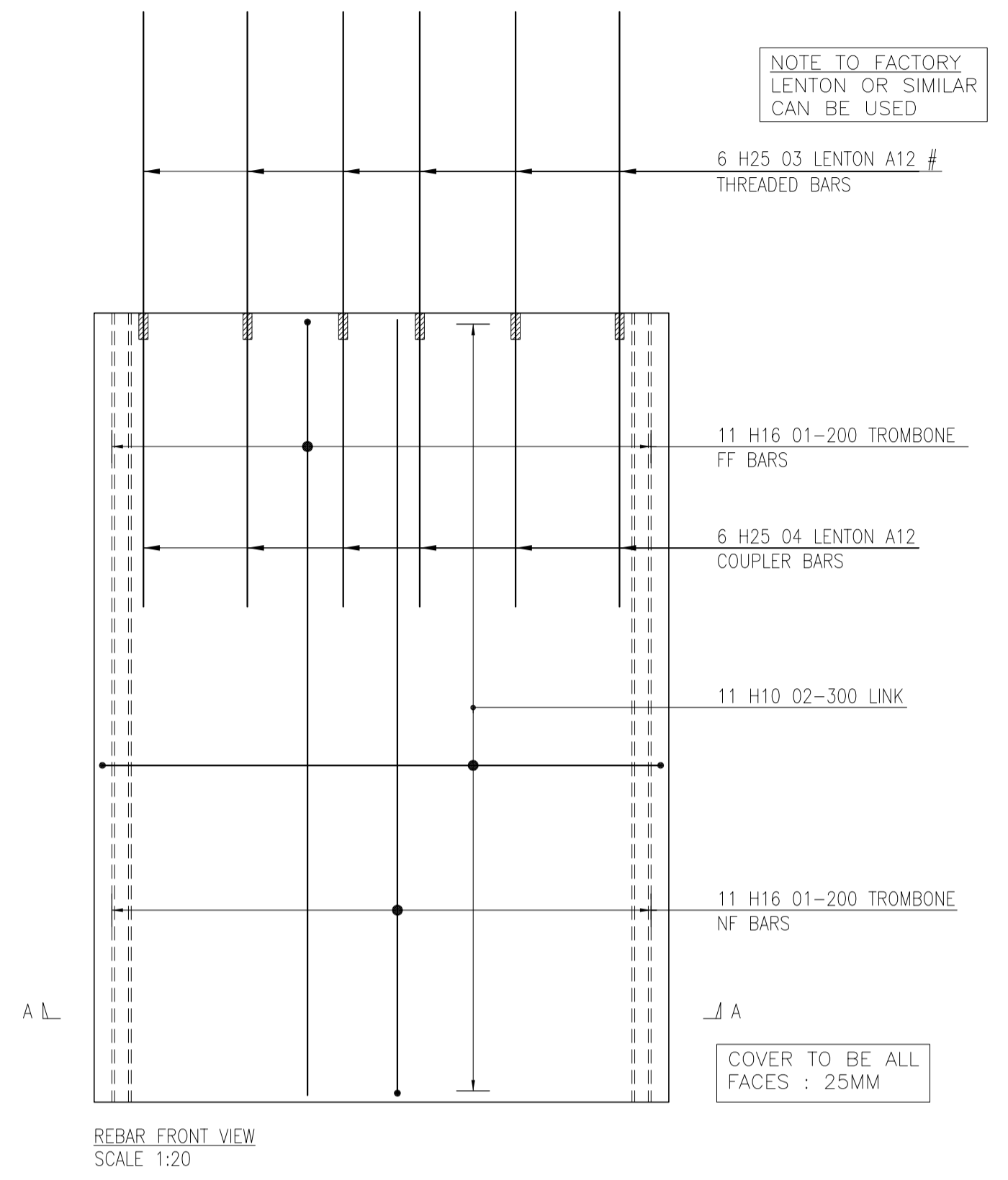
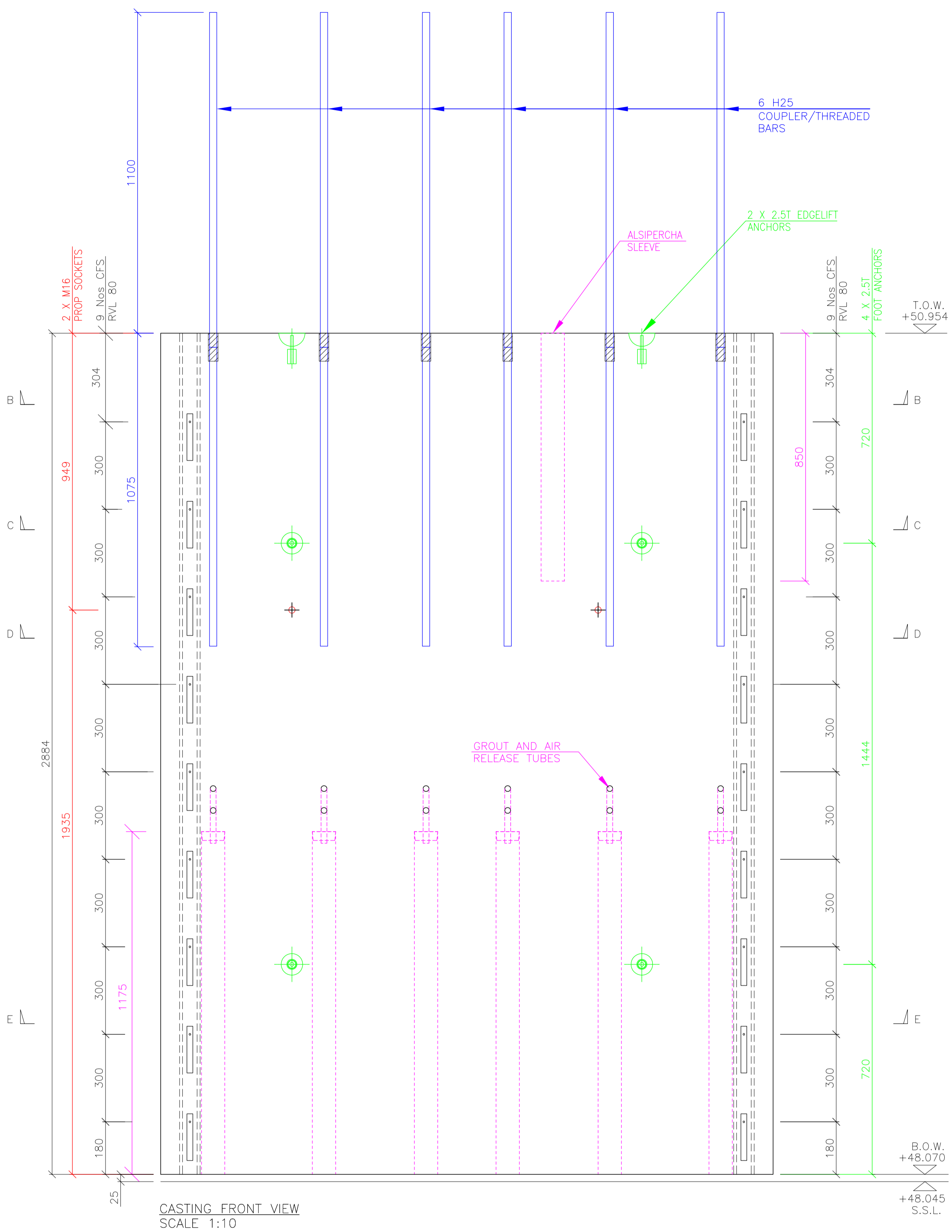
THE INFORMATION CONTAINED IN THIS DRAWING IS FOR REFERENCE ONLY AND IS WITHOUT CHARGE, LIABILITY OR RESPONSIBILITY.

NOTES:

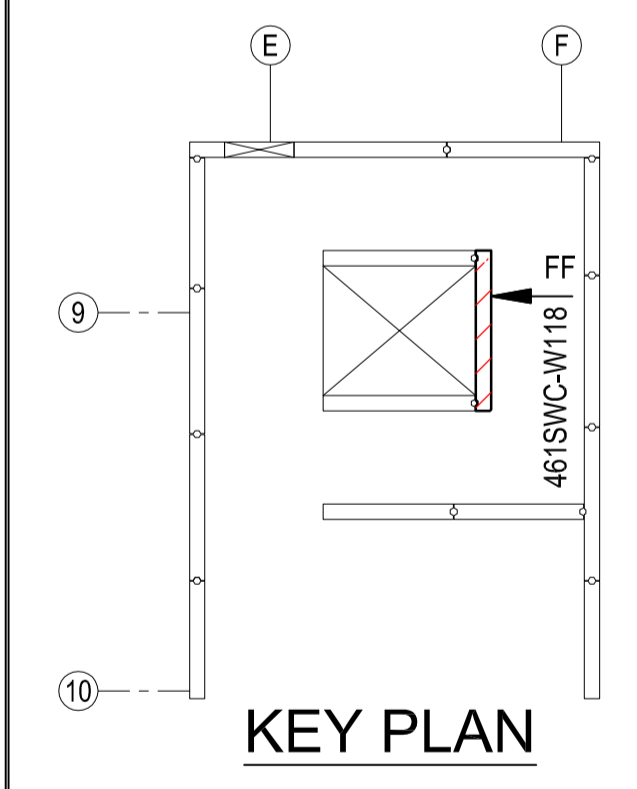
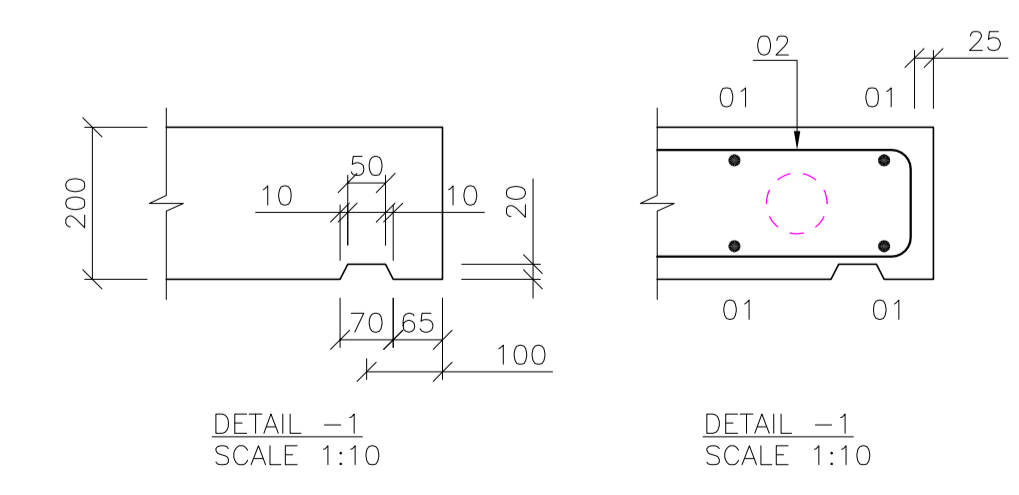
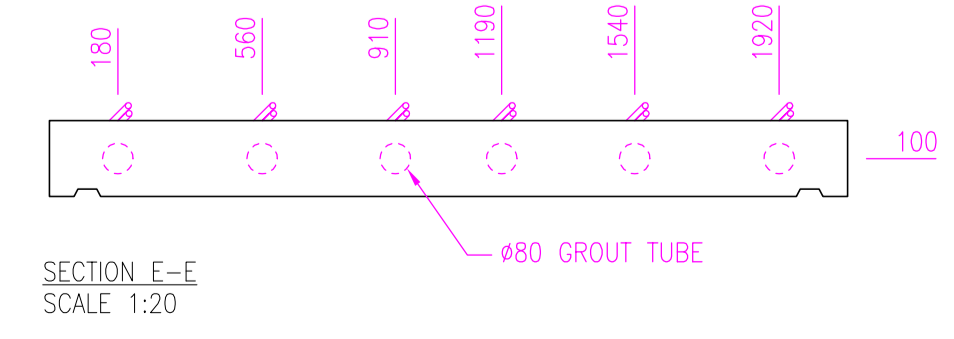
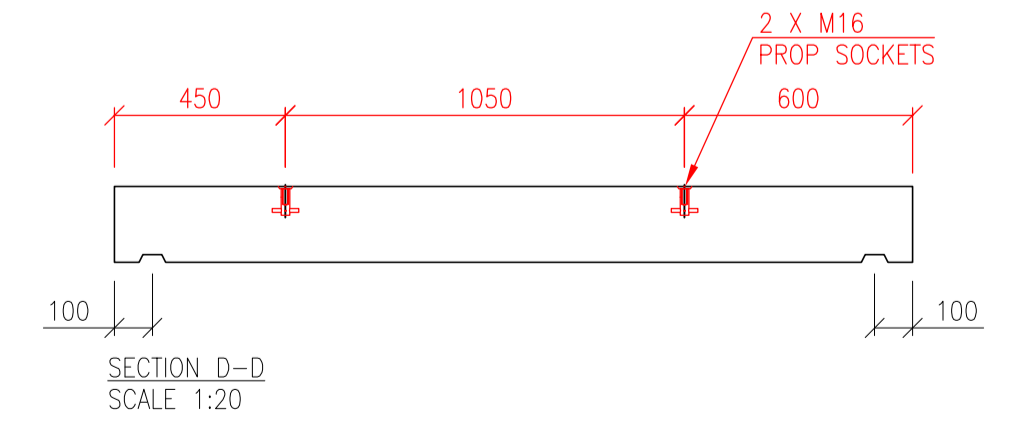
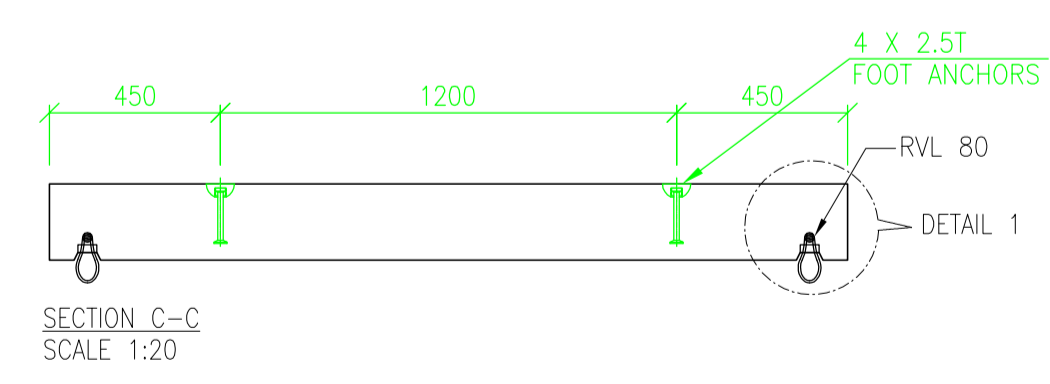
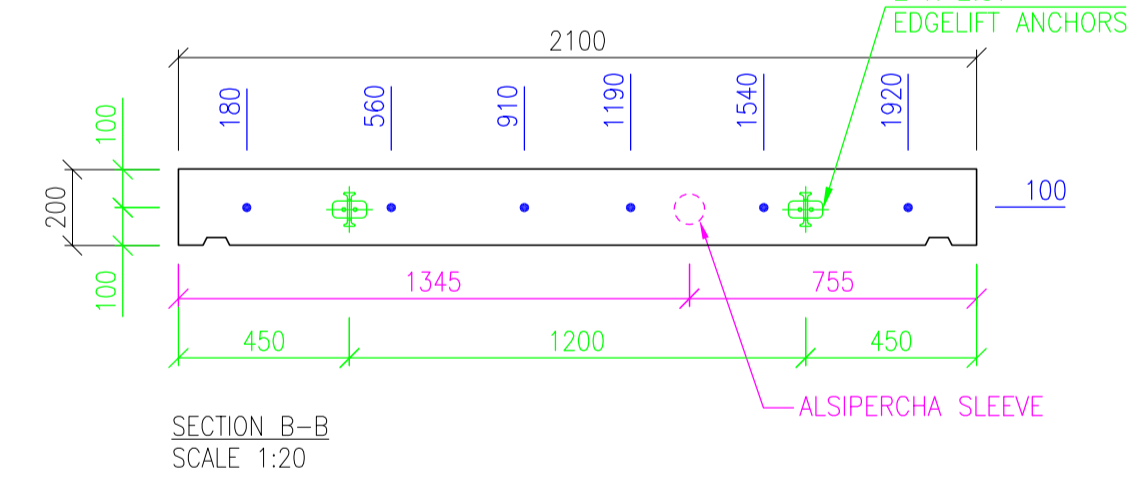
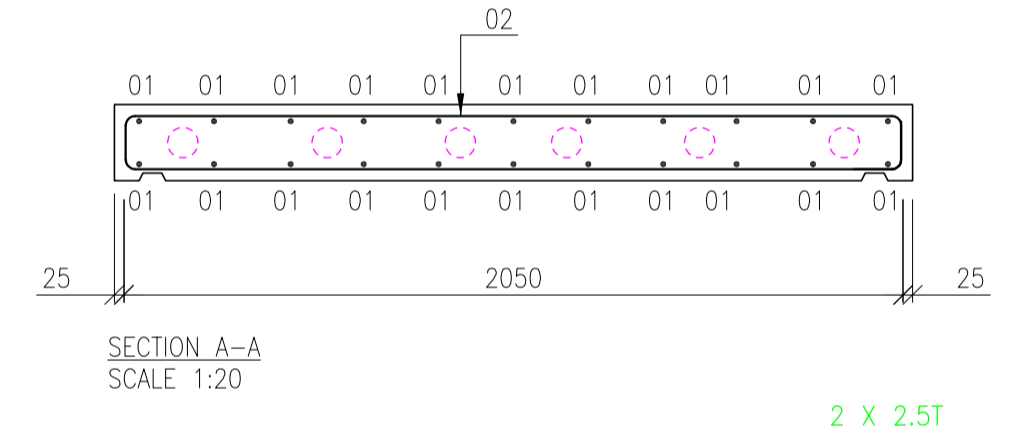
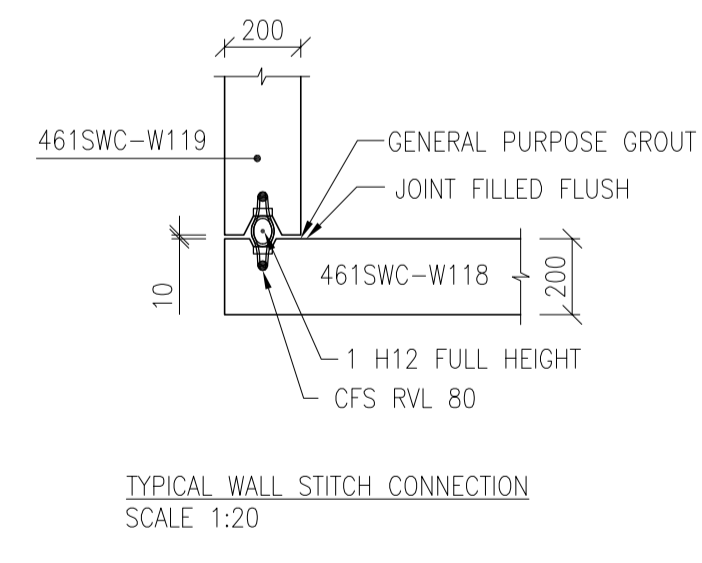
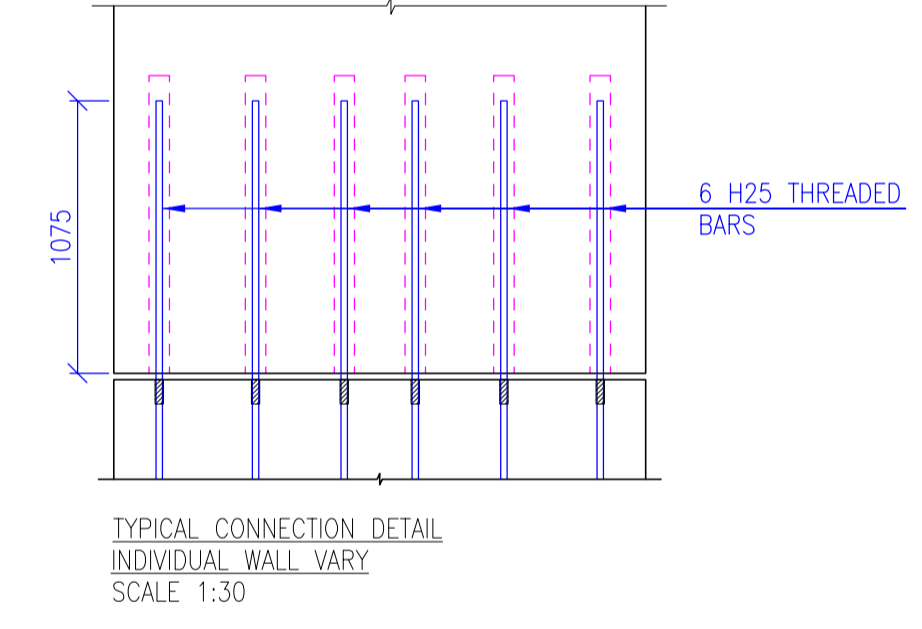
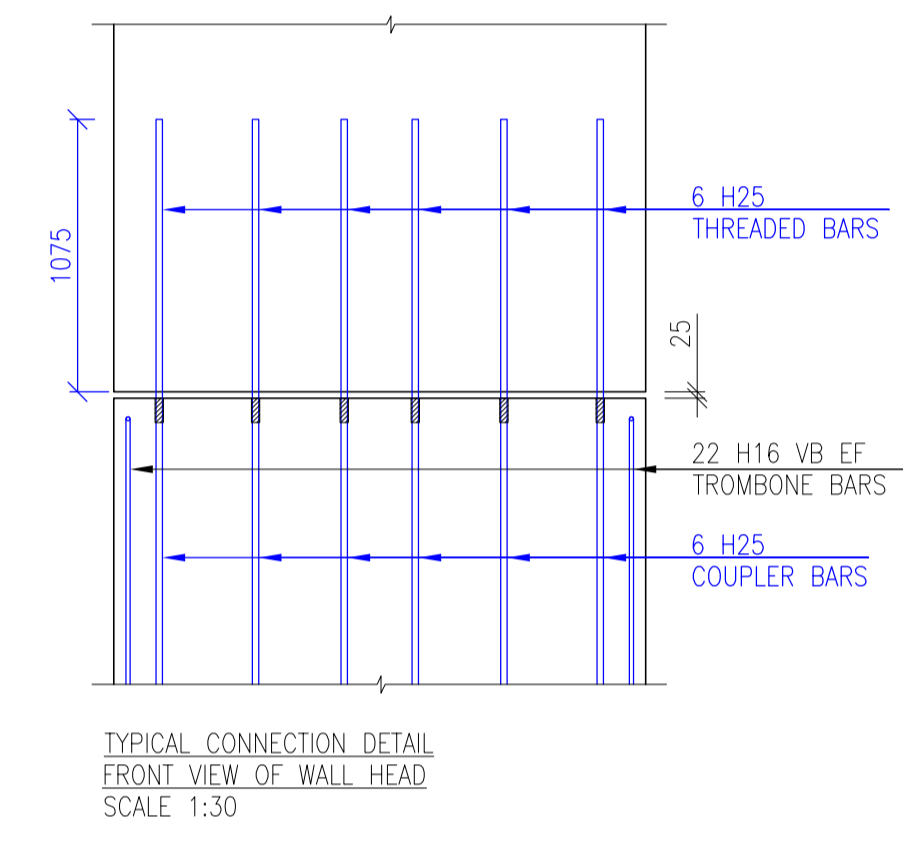
1. ALL DIMENSIONS IN MILLIMETERS UNLESS STATED OTHERWISE
2. THIS DRAWING TO BE READ IN CONJUNCTION WITH THE FOLLOWING GENERAL ARRANGEMENT DRAWINGS: 461SWC-KPW01A

REINFORCED CONCRETE NOTES

1. THIS DRAWING IS TO BE READ IN CONJUNCTION WITH ALL OTHER RELEVANT ENGINEER'S AND ARCHITECT'S DRAWINGS AND SPECIFICATIONS.
2. CONCRETE TO BE DESIGNATE RC60 IN ACCORDANCE WITH BS8110. REFER TO SPECIFICATION.
3. GROUT TO BE DESIGNATE 60 N/MM². REFER TO SPECIFICATION.
4. CONCRETE COVER TO BE: ALL FACES - 25 MM
5. LAP LENGTHS:
 H10 - 430MM
 H12 - 520MM
 H16 - 690MM
 H20 - 860MM
 H25 - 1075MM
 H32 - 1380MM
 H40 - 1720MM
 UNLESS OTHERWISE NOTED
6. TOTAL REINFORCEMENT WEIGHT = 205 Kg
7. UNIT CUBE = 1.21 m³
8. UNIT WEIGHT = 3.18 T



INSTALLATION PARTS - CORE WALL		
NO OF.	DESCRIPTION	SYMBOL
2	2.5T EDGELIFT ANCHOR	
4	2.5T SWIFTLIFT FOOT ANCHOR	
6	80# GROUT TUBE	
1	80# ALSPERCHA SLEEVE	
2	M16 x 75 SOLID ROD SOCKET	
18	CFS RVL-80 WIRE ROPE BOXES	
6	H25 COUPLER BARS & THREADED BARS	



REV	BY	CHK	DATE	AMMENDMENTS
P1				
TITLE:		PRECAST WALL		
PROJECT:				
CLIENT:				
STATUS:		APPROVAL		
DRN:	CHK:	DATE:		
DWG NO:	SCALE:	PAPER SIZE:		

PRECAST UPSTAND TYPE -

CALL OFF	URN
DATE	TIME

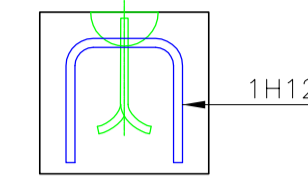
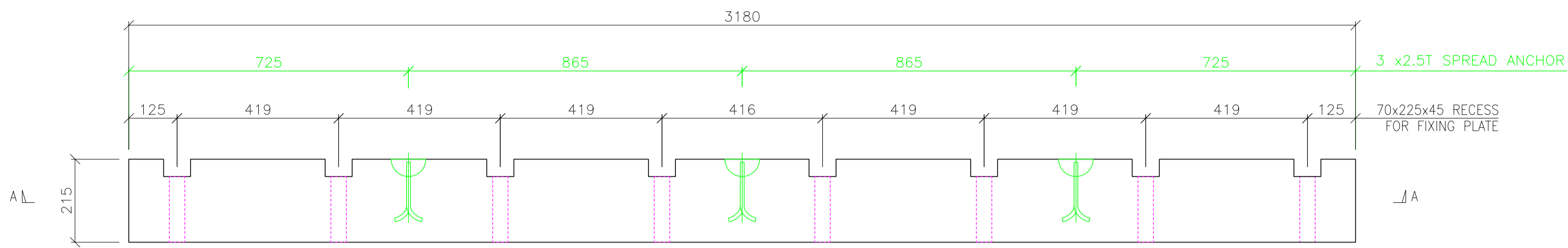
THE INFORMATION CONTAINED IN THIS DRAWING IS FOR REFERENCE ONLY AND IS WITHOUT CHARGE, LIABILITY OR RESPONSIBILITY

NOTES:

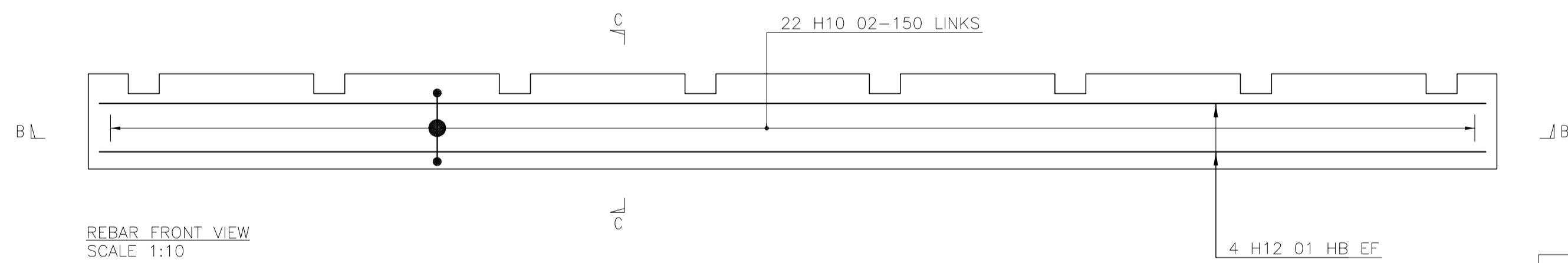
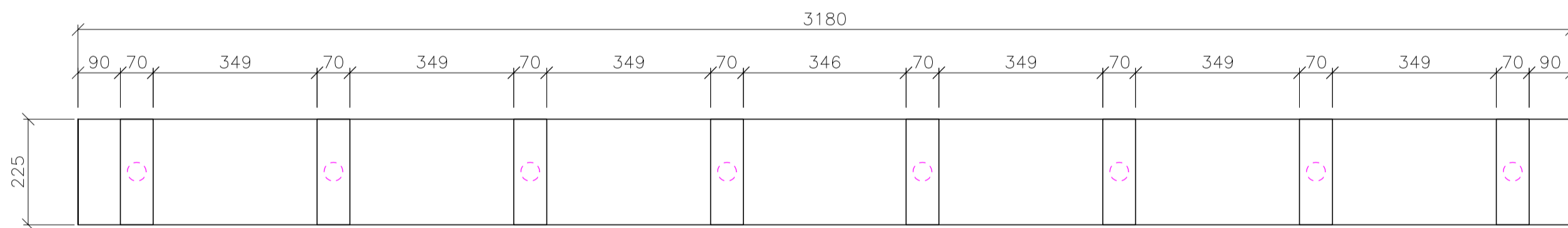
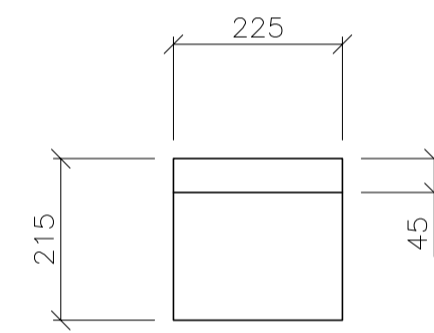
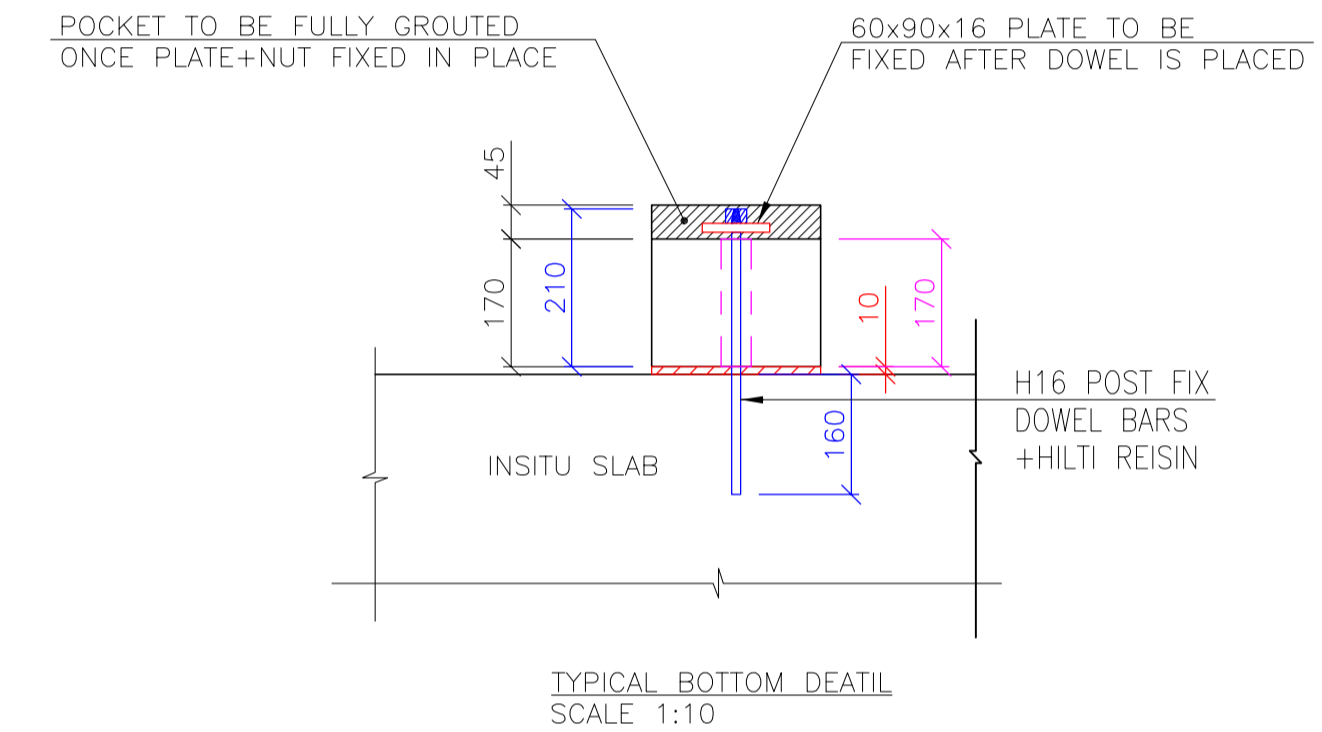
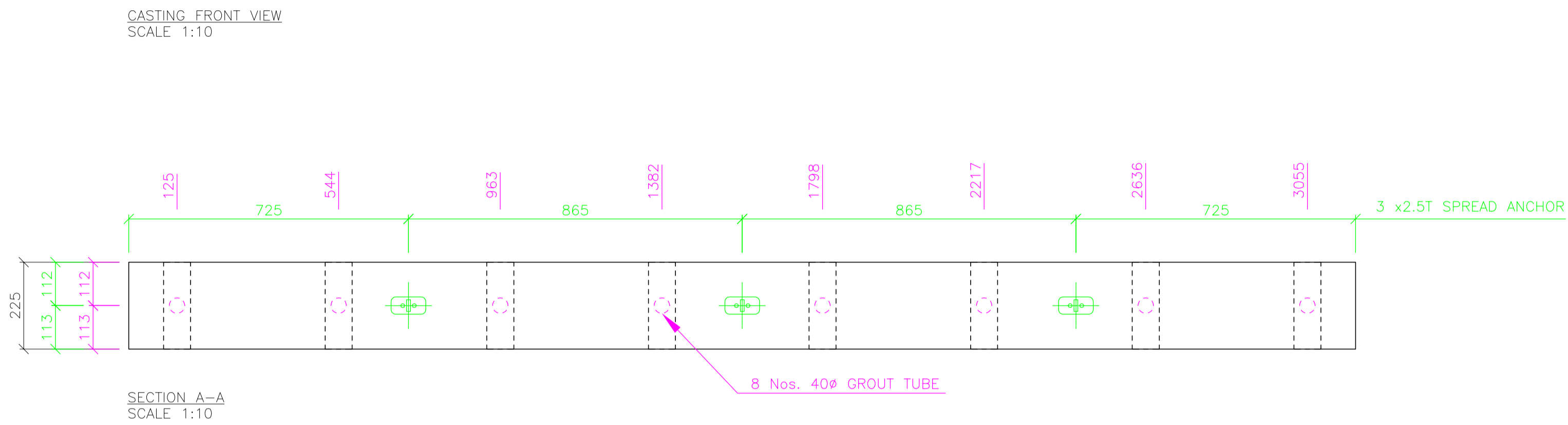
- ALL DIMENSIONS IN MILLIMETERS UNLESS STATED OTHERWISE
- THIS DRAWING TO BE READ IN CONJUNCTION WITH THE FOLLOWING GENERAL ARRANGEMENT DRAWINGS: 461SWC-KPUP01

REINFORCED CONCRETE NOTES

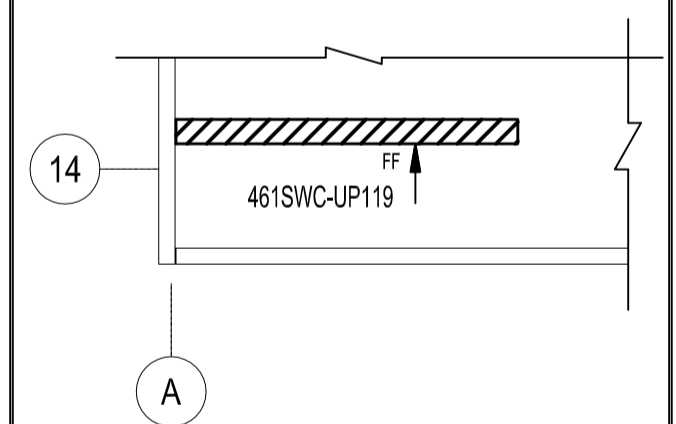
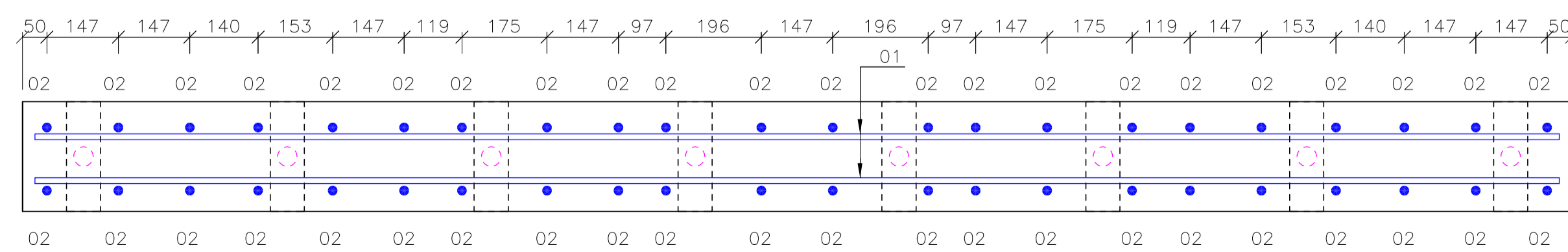
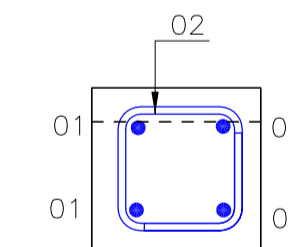
- THIS DRAWING IS TO BE READ IN CONJUNCTION WITH ALL OTHER RELEVANT ENGINEER'S AND ARCHITECT'S DRAWINGS AND SPECIFICATIONS.
- CONCRETE TO BE DESIGNATE RC60 IN ACCORDANCE WITH BS8110. REFER TO SPECIFICATION.
- GROUT TO BE DESIGNATE 60 NMMF. REFER TO SPECIFICATION.
- CONCRETE COVER TO BE: ALL FACES - 25 MM
- LAP LENGTHS:
H10 - 430MM
H12 - 520MM
H16 - 630MM
H20 - 860MM
H25 - 1075MM
H32 - 1380MM
H40 - 1720MM
UNLESS OTHERWISE NOTED
- TOTAL REINFORCEMENT WEIGHT = 22 Kg
- UNIT CUBE = 0.16 m³
- UNIT WEIGHT = 0.42 T



INSTALLATION PARTS UPSTAND		
NO OF.	DESCRIPTION	SYMBOL
3	2.5T SPREAD ANCHOR	⊕ / ⊕
8	40# GROUT TUBE	⊕



COVER TO BE ALL FACES : 25MM



P1			ISSUED FOR APPROVAL
REV	BY	CHK	DATE
			AMMENDMENTS
TITLE:		PRECAST UPSTAND	
PROJECT:			
CLIENT:			
STATUS:		APPROVAL	
DRN:	CHK:	DATE:	
DWG NO:	SCALE:	PAPER SIZE:	